


1. TECHNICAL SPECIFICATIONS

Protection Index: IP20
Up to 15 remotes can be assigned to each motor.

Received Frequency: 433.92MHz
Charging: 5V/1A Type C
Working Temp: -10°C to 60°C

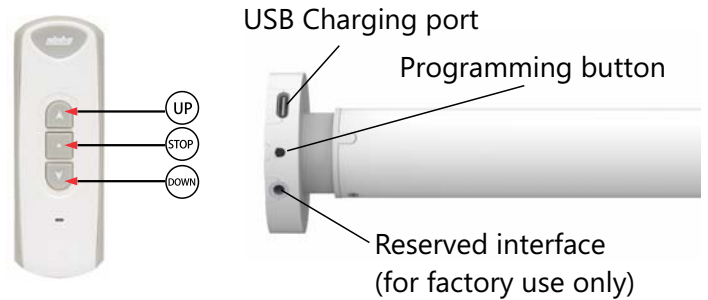
Code: Rolling
Charge Time: 5-6 hours

2. CHARGING AND WAKING UP MOTOR

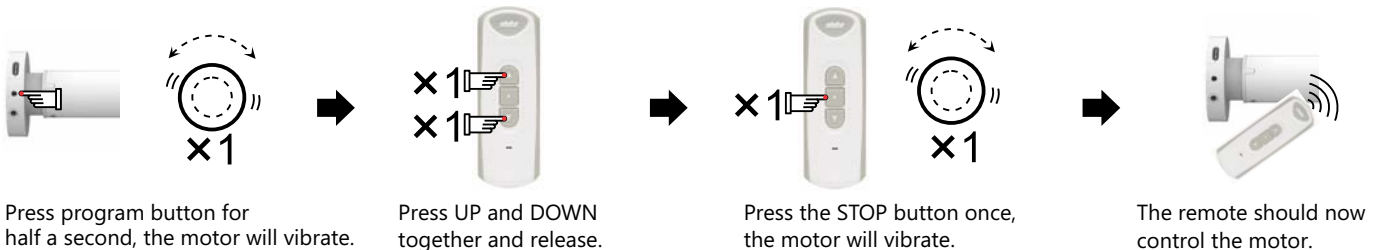
 Please charge the motor using charger 5V/1A before operation. The motor won't function until it has been charged.

Method A Plug 5V/1A charger into charging port for a few seconds till motor vibrates.

Method B Short press program button 5 times and release, the LED light turns green, and the motor vibrates.

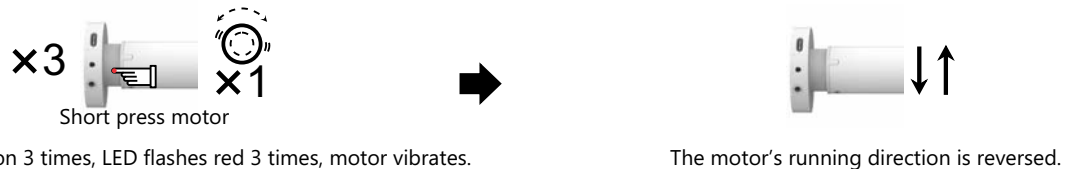


3. PAIR REMOTE TO MOTOR

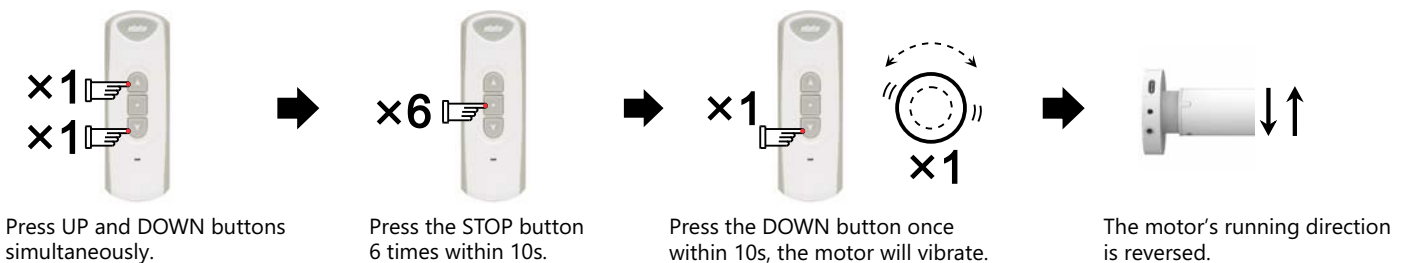


4. CHANGING THE RUNNING DIRECTION

Method A.

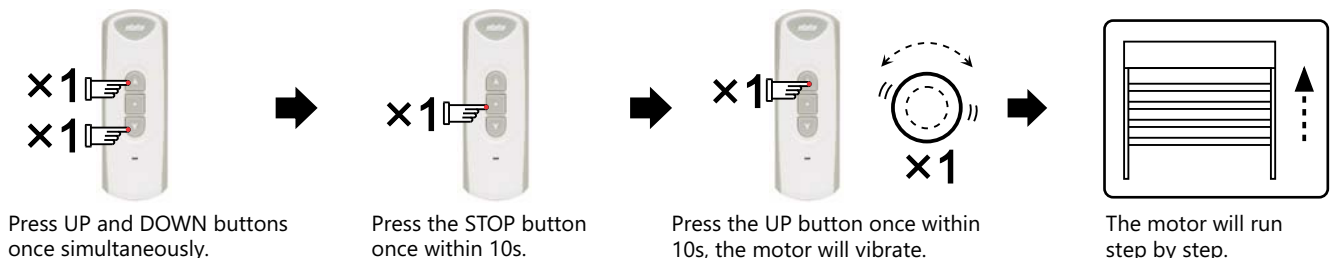


Method B.



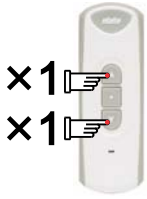
5. TURN ON STEP BY STEP FUNCTION

Note: If the motor is in step-by-step mode, pressing the UP or DOWN button for 3s will make the motor will run continuously.



6. TURN OFF STEP BY STEP FUNCTION The motor will operate normally.

Note: If the motor is in step-by-step mode, holding the UP or DOWN button for 3s will make the motor run continuously.



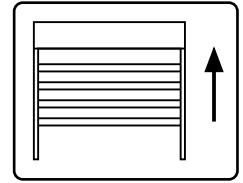
Press UP and DOWN buttons once simultaneously.



Press the STOP button once within 10s.



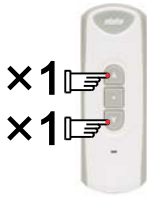
Press the DOWN button once within 10s, the motor will vibrate.



The motor will run continuously.

7. TOP LIMIT SETTING

First, move the blind to the desired position.



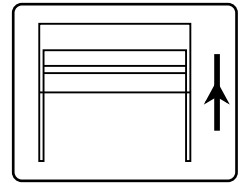
Press UP and DOWN buttons once simultaneously.



Press the STOP button twice within 10s.



Press the UP button once within 10s, the motor will vibrate.



The TOP limit is set

8. BOTTOM LIMIT SETTING

First, move the blind to the desired position.



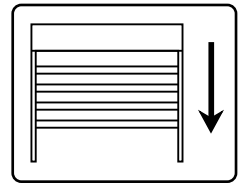
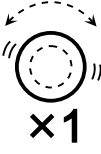
Press UP and DOWN buttons simultaneously.



Press the STOP button twice within 10s.



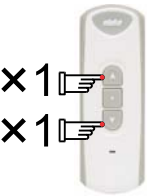
Press the DOWN button once within 10s, the motor will vibrate.



The BOTTOM limit is set

9. TOP LIMIT DELETING

First, move the blind to the desired position.



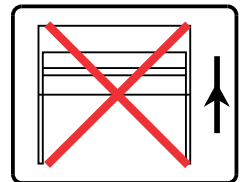
Press UP and DOWN buttons simultaneously.



Press the STOP button 4 times within 10s.



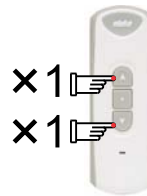
Press the UP button once within 10s, the motor will vibrate.



The top limit is deleted.

10. BOTTOM LIMIT DELETING

First, move the blind to the desired position.



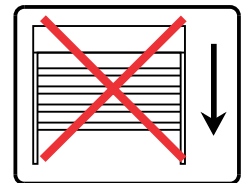
Press UP and DOWN buttons simultaneously.



Press the STOP button 4 times within 10s.



Press the DOWN button once within 10s, the motor will vibrate.



The bottom limit is deleted.

11. DELETE REMOTE

Method A: This method deletes current remote from the motor.

Press the UP and DOWN buttons simultaneously. → Press the STOP button 7 times within 10s. → Press the UP button once within 10s, the motor will vibrate. → All channels from the remote you are holding are now deleted from this motor. Others will remain.

Method B: This method deletes all paired remotes from the motor's memory.

Press UP and DOWN buttons simultaneously. → Press the STOP button 6 times within 10s. → Press the UP button once within 10s, the motor will vibrate. → All the paired remotes and channels are deleted.

12. ASSIGNING AN ADDITIONAL REMOTE

EXISTING → **EXISTING** → **NEW** → **NEW**

Press UP and DOWN together and release on the existing remote. → Press STOP 8 times, the motor will vibrate. → Press UP and DOWN together and release on the new remote. → Press STOP once and the motor will vibrate. The new remote channel will now operate the motor.

13. THE THIRD LIMIT

First, move the blind to the desired position.

A. Set the Third Limit

Note: The third limit is also named as the intermediate limit (favourite position), it is available at any position between up and down limit. The third limit will be deleted automatically if the up or down limit is deleted.

Move the blind to the desired position and press STOP 4 times. → The motor will vibrate; it means the current position is set as the third limit. → Press the STOP button for 2s, the motor will move the blind to the third limit position from any other current position.

PLEASE NOTE:

If you want to reset the third limit to a new position, repeat the above steps, the new position will be memorised as the third limit.

14. THE LIGHT INDICATOR

(1) Recharging Light Indicator (takes about 5-6 hours to charge from flat to full)

(1) When the battery is recharging, the red light is on.

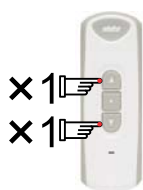
(2) When the battery is fully charged, the light will turn green.

(2) Low battery light indicator on motor

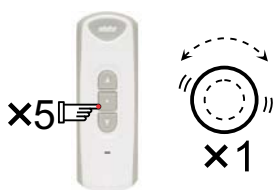
When battery voltage is too low, press any button on the remote. Motor will vibrate and the light will flash red. If remote's button is pressed multiple times, the motor will vibrate per each pressing. The maximum number of vibrations is 10 and the motor won't respond to the remote, the indication light will still flash red, this is to remind you that the motor needs to be charged immediately.

Red light flashing

15. SPEED ADJUSTMENT VIA REMOTE



Press UP and DOWN simultaneously.



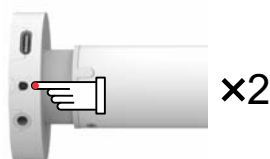
Press STOP 5 times, within 10 secs.



Press UP or DOWN button once to increase or decrease speed. The motor will then vibrate. The number of vibrations stand for different speeds.

N=1:20rpm
N=2:25rpm
N=3:30rpm

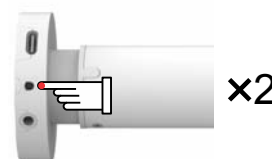
16. USING MOTOR PROGRAM BUTTON TO CONTROL BLIND



Short press program button twice. The indicator light flashes red twice, motor will run in one direction.



Short press program button once, the motor will stop running.



Short press program twice again, the indicator light flashes red twice, motor will run in another direction.

17. SLEEP MODE & RESET

In order to save battery, the motor is in sleep mode as default. Short press program button 5 times, the indicator light will turn green, or charge the motor for a few seconds till it vibrates. Both methods will wake up the motor.

To set the motor to sleep mode, short press program button 5 times. The indicator light will flash red, or charge the motor for a few seconds till it vibrates. Both methods will set the motor to sleep mode.

Pressing and holding the program button for 10 seconds will delete all settings, you can then reset the motor.

Announcement

To ensure your safety and the continued safe operation of our products, we urge you to adhere to the following guidelines with regards to Lithium-Ion batteries:

1. ****Avoid Overcharging**** Overcharging the batteries can lead to overheating and, in extreme cases, fire. Once the motor's green light indicates a full charge, immediately disconnect it from the charging circuit to prevent overcharging.
2. ****Prevent Overheating**** Excessive heat can also pose a risk to the batteries. Please ensure that the motor is not exposed to prolonged periods of high temperature or direct sunlight, as this can lead to overheating and potential fire hazard.
3. ****Immediate Action**** In the event of any unusual warmth, discolouration, or odour emanating from the motor, immediately disconnect it from the power source and refrain from further use.

PLEASE NOTE:

- To keep product in good condition, please charge the motor every 3 months.
- Please do not let children play with the remote or motor.
- Storage temperature: -4°F to 149°F