

# Alpha WSER CASSETTE AWNING MOTOR p1

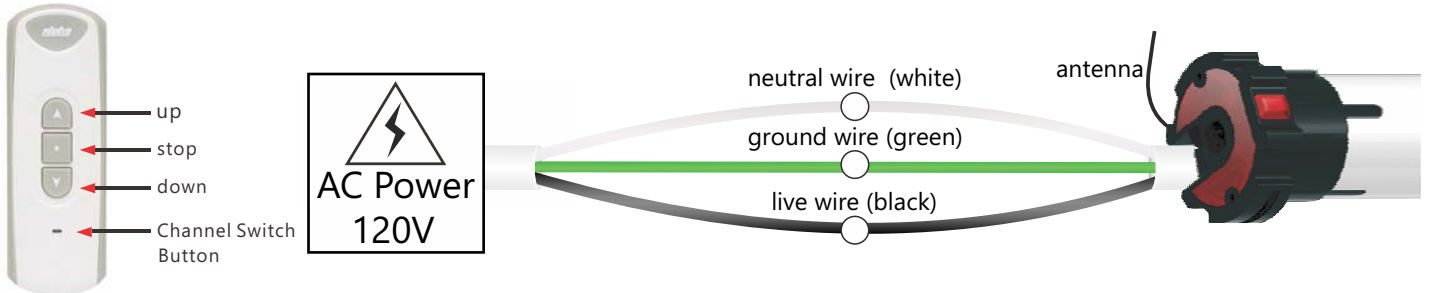
ALPHA SUPPORT PHONE (909) 307-2320

## 1. TECHNICAL SPECIFICATIONS

Power AC 120V, 60Hz  
Protection Index: IP 44

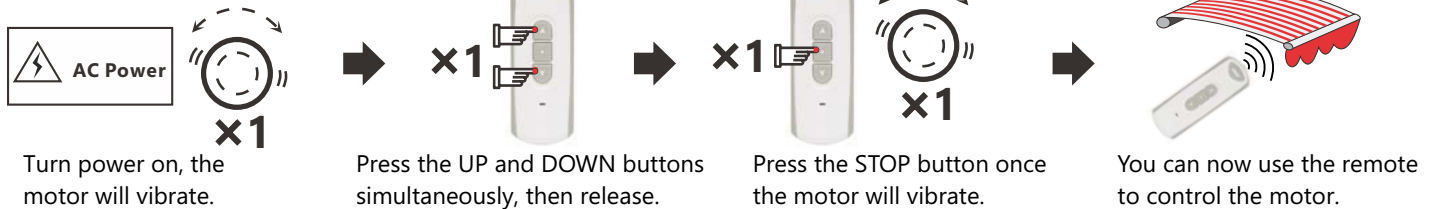
Up to 15 remotes may be assigned to each motor.  
Thermal protection will engage after 4 minutes of continuous running.

## 2. WIRE CONNECTIONS



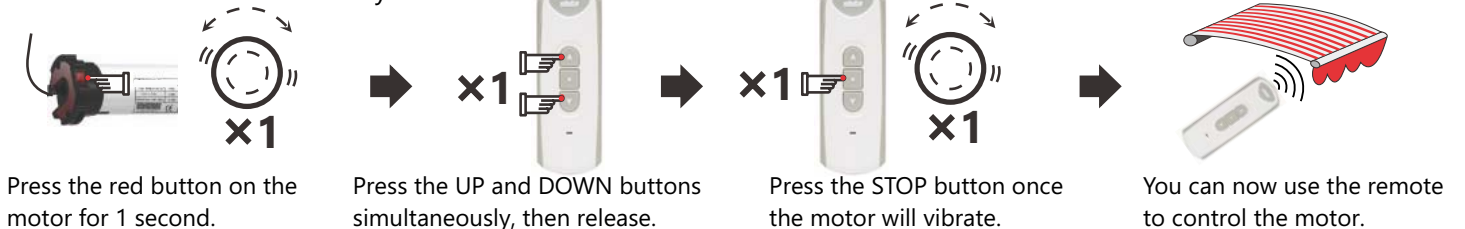
## 3. ASSIGNING A REMOTE TO A MOTOR (You have 10 seconds to complete the task)

**Method A** For the first remote assigned

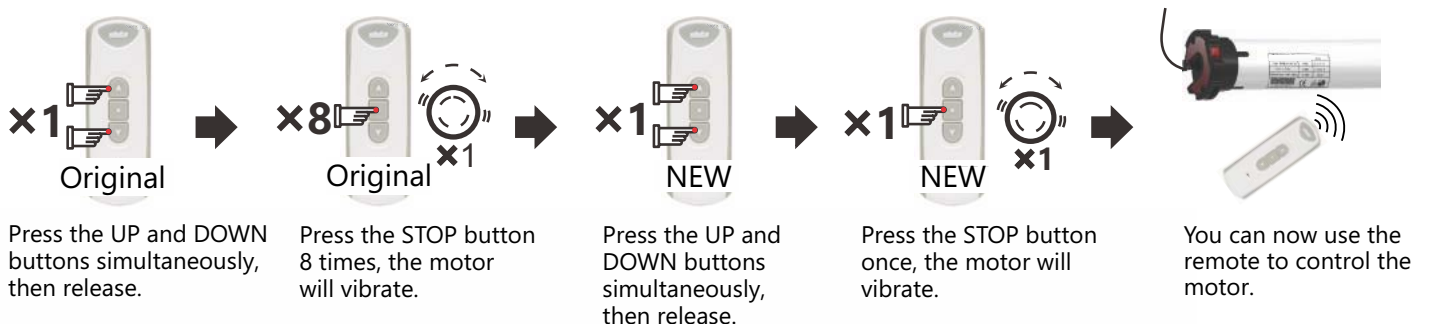


**Method A.** Can only be used again if you cut and restore power to the motor 3 times. You must allow 5 seconds before restoring power each time and you must allow the motor to vibrate properly each time. After the third cycle, you may assign the remote.

**Method B** Can be used at any time

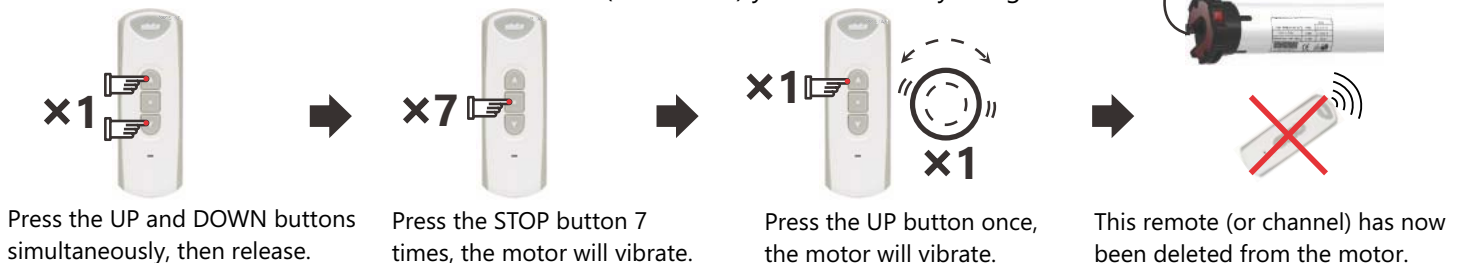


## 4. ASSIGNING AN EXTRA REMOTE TO A MOTOR VIA THE ORIGINAL REMOTE

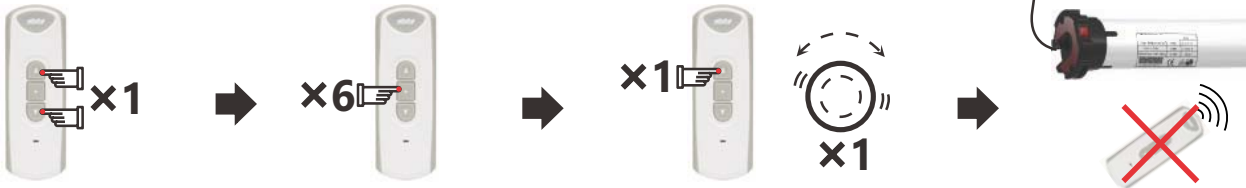


## 5. DELETING A REMOTE FROM A MOTOR (You have 10 seconds to complete the task)

**Method A** This will delete the individual remote (or channel) you are currently using.



## Method B (WARNING this will delete ALL remotes assigned to the motor)



Press the UP and DOWN buttons simultaneously, then release.

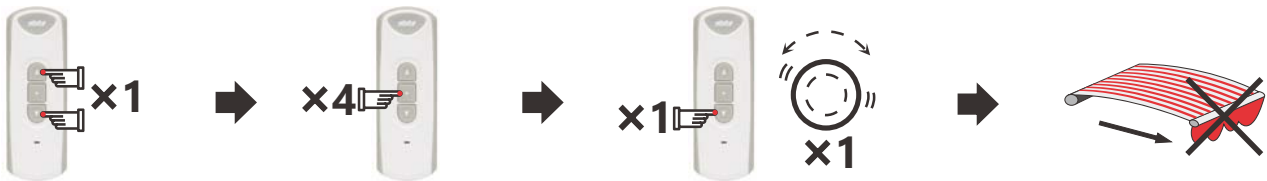
Press the STOP button 6 times.

Press the UP button once, the motor will vibrate.

All remotes have been deleted from the motor.

## 6. SETTING THE LIMITS (follow steps 1-5 below precisely)

### 01. First delete outer limit (just in case one was set during testing)



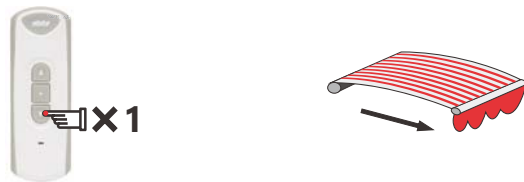
Press the UP and DOWN buttons simultaneously, then release.

Press the STOP button 4 times.

Press the DOWN button once, the motor will vibrate.

The outer limit has been deleted.

### 02. Confirm the motor's direction THE DOWN BUTTON MUST OPEN THE AWNING



Press the DOWN button on the remote.

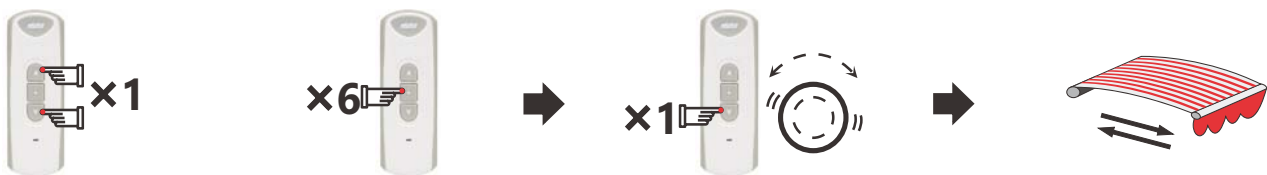
Check to see if the awning opens, then press STOP.

#### NOTE:

If the awning opens, go to Step 4 below to set the outer limit.

If the awning did not open, go to Step 3 below to change direction.

### 03. Changing the motor's direction (You have 10 seconds to complete the task)



Press the UP and DOWN buttons simultaneously, then release.

Press the STOP button 6 times.

Press the DOWN button once, the motor will vibrate.

The IN and OUT directions of the motor have been reversed. Repeat Step 2.

### 04. Setting the outer limit (You have 10 seconds to complete the task)



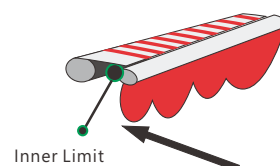
Adjust awning to desired position then: Press the UP and DOWN buttons simultaneously, then release. Then press STOP twice.

Press the DOWN button once, the motor will vibrate.

During use, the motor will rebound slightly at the outer limit to flatten the fabric.

### 05. Setting the inner limit (for folding arm awnings and cassettes ONLY, otherwise see page 4).

After the outer limit is set, when closing the awning for the first time allow it to stop on its own based on tension. The motor will then apply only 25% of the force when it closes in the future, although this is adjustable in Step 10.



To manually set the inner limit, see page 4

## 7. SETTING THE THIRD LIMIT (midway position, between the inner and outer limits)



x4



x1



hold down  
for 2 seconds

Stop the awning in the new desired position then press STOP button 4 times.

The motor will vibrate and the third limit is set.

Holding down the STOP button for 2 seconds will send the motor to the third limit position.

## 8. CHANGING THE THIRD LIMIT



x4



x1



hold down  
for 2 seconds

Stop the awning in the new desired position then press STOP button 4 times.

The motor will vibrate and the new third limit is set.

Holding down the STOP button for 2 seconds will send the motor to the new third limit position.

**NOTE:** The third limit will be deleted automatically if either the top or bottom limits are deleted.

## 9. WIND AND LIGHT SENSOR CONTROL

### 01. Activate Wind and Light sensor



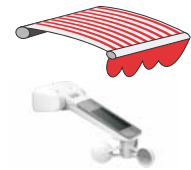
x1



x1



x1



Press the UP and DOWN buttons simultaneously, then release.

Press the STOP button once.

Press the UP button once, the motor will vibrate.

The wind and light sensor is now operational.

### 02. Deactivate Wind and Light sensor



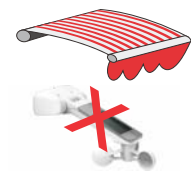
x1



x1



x1



Press the UP and DOWN buttons simultaneously, then release.

Press the STOP button once.

Press the DOWN button once, the motor will vibrate.

The wind and light sensor is now inactive.

## 10. ADJUSTING TORQUE LEVEL USED TO STOP THE INNER LIMIT



x1



x4



xN



x1

Press the UP and DOWN buttons simultaneously, then release.

Press the STOP button 4 times.

Press the UP button 1, 2, 3 or 4, times as required, see below.

Press the STOP button once to finish the sequence.

**The number of times the UP button (N) is pressed will determine the level of torque applied before the motor will stop at the inner limit. Press once for 25%, twice for 50%, three times for 75% or four times for 100% torque required to stop. (Default is 25%)**

## Handy Tips

1. Always roll the Awning out and in first if setting the inner limit manually. Failure to do so may result in a change of limit position due to a change in fabric tension.
2. When pressing up and down simultaneously during setup, be as precise as possible. Ideally it should sound like one button click when both are pressed.
3. If you catch yourself making an error during a setup process, stop and allow 10 seconds for the motor to time out, then try again.
4. Do not hold any buttons down during setup process unless specifically told to do so. A half second press should be plenty and allow 1 second between presses.
5. If you are using a multi-channel remote, make certain that it is on the correct channel before you assign it to a motor.

## Turning the outer limit rebound On/Off

The outer limit rebound is a function that tightens the fabric once the awning has reached it's outer limit and it turned OFF as the default setting. It does this by doing a small reverse rotation after the outer limit is reached. In some situations this may not be desirable.

### **To turn the rebound function ON:**

(Press Up and Down simultaneously) + (press STOP 3 times) + (press UP once)

### **To turn the rebound function OFF:**

(Press Up and Down simultaneously) + (press STOP 3 times) + (press DOWN once)

**Note: If the inner limit is set manually, the rebound function will not work.**

## Manually setting the inner limit

This folding arm awning motor is designed to set it's own inner limit based on torque sensing. If you need to set an inner limit manually, it can be done using the following procedure only.

Delete outer limit first (inner limit cannot be set manually if outer limit is already set)

(Press Up and Down simultaneously) + (press STOP 4 times) + (press DOWN once)

Adjust awning to desired inner limit position and set inner limit

(Press Up and Down simultaneously) + (press STOP twice) + (press UP once)

Now adjust awning to desired outer limit position and set the limit

(Press Up and Down simultaneously) + (press STOP twice) + (press DOWN once)

Your limits are now set. Be aware that if inner limit is set manually, the motor will not rebound (self tension) at the outer limit. Deleting the outer limit will also delete the inner limit automatically. Deleting the outer limit is the only way to delete the inner limit. A manual inner limit may change position as fabric stretches over time.