

1. TECHNICAL SPECIFICATIONS

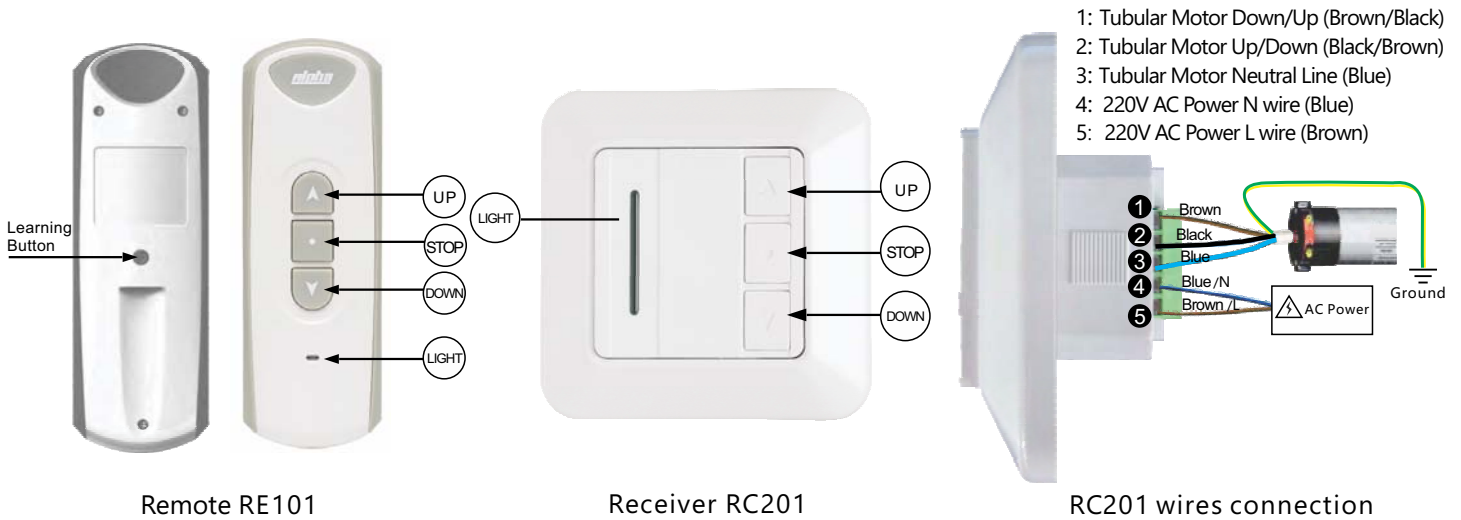
Power: AC110V(60Hz) Rated: ≤400W

The receiver will cut the power after working for 4mins continuously

The receiver can be controlled by 15 remotes at most

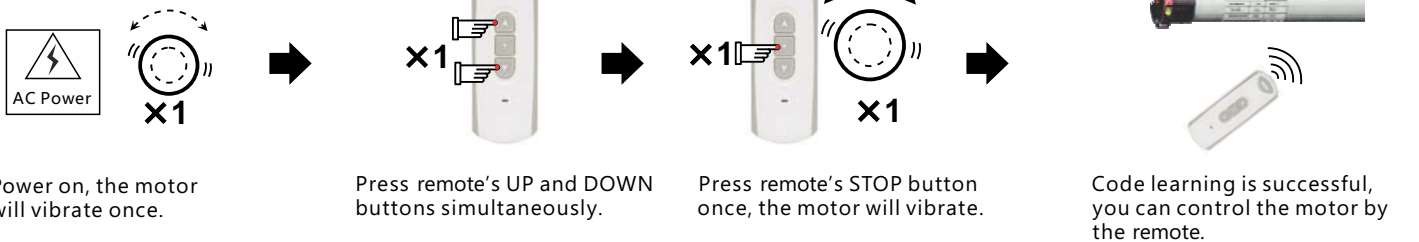
The receiver's UP/STOP/DOWN buttons can also control the motor

2. PRODUCT APPEARANCE

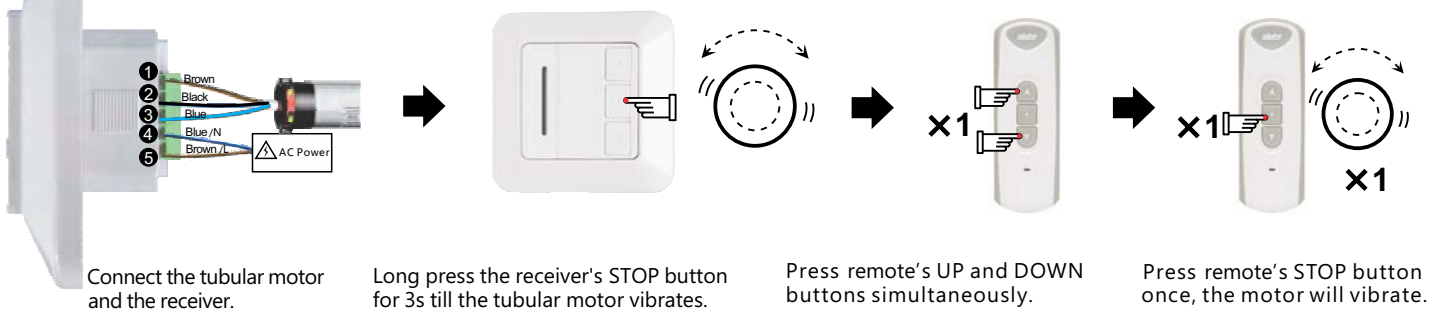


3. CODE LEARNING

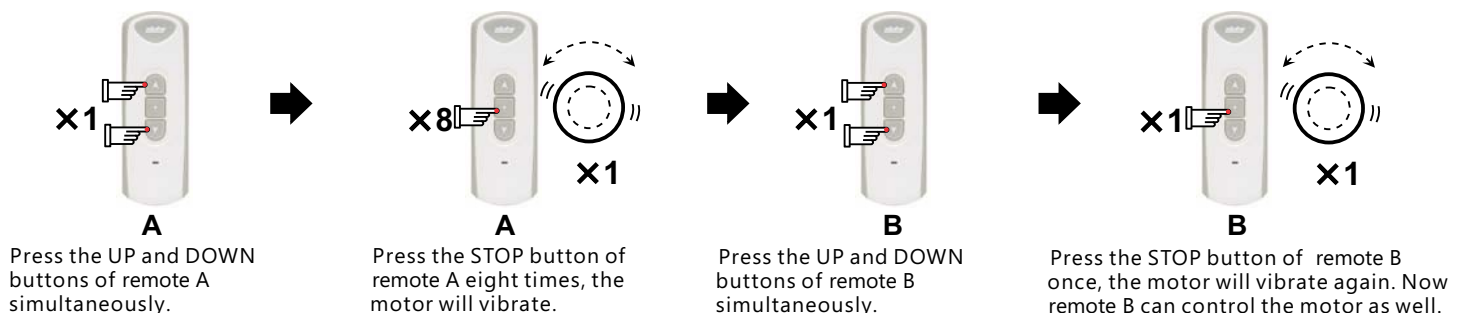
Way A



Way B

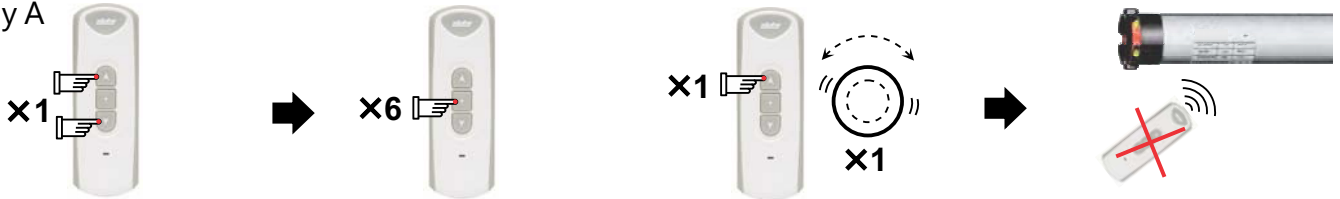


4. COPY Note: remote B can control the tubular motor after it learns code from remote A



5. CODE DELETING

Way A



Press remote's UP and DOWN buttons simultaneously.

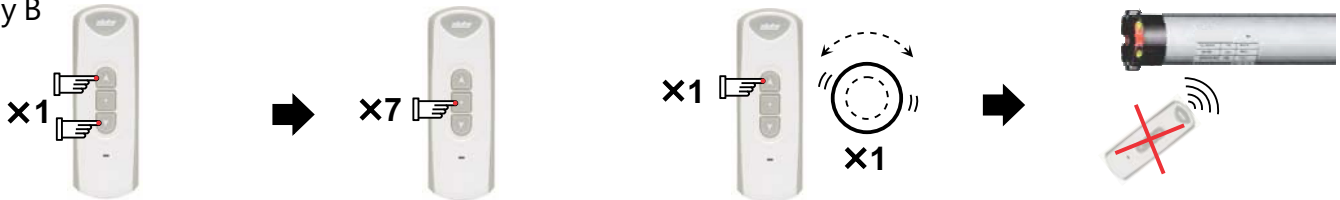
Press remote's STOP button six times.

Press remote's UP button once, the motor vibrates once.

All the remotes that have already learned the motor's code won't control the motor any more.

Note: All the remotes will not control this motor, unless you cut off the power and do code learning again.

Way B



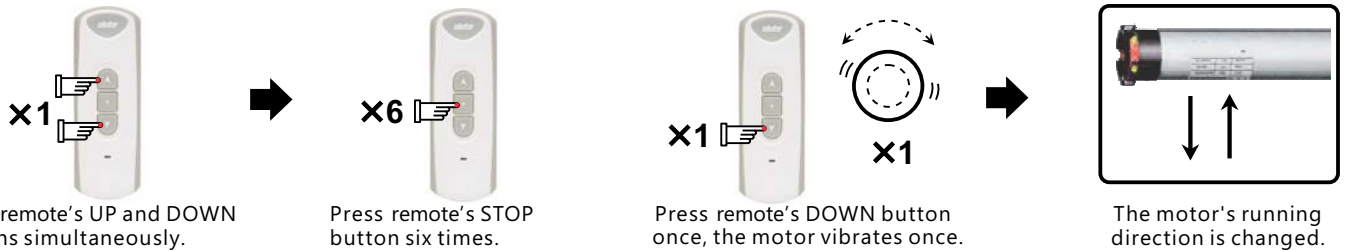
Press remote's UP and DOWN buttons simultaneously.

Press remote's STOP button seven times.

Press remote's UP button once, the motor vibrates once.

This remote you are operating now won't control the motor any more.

6. DIRECTION CHANGE



Press remote's UP and DOWN buttons simultaneously.

Press remote's STOP button six times.

Press remote's DOWN button once, the motor vibrates once.

The motor's running direction is changed.

7. SET STEP BY STEP FUNCTION



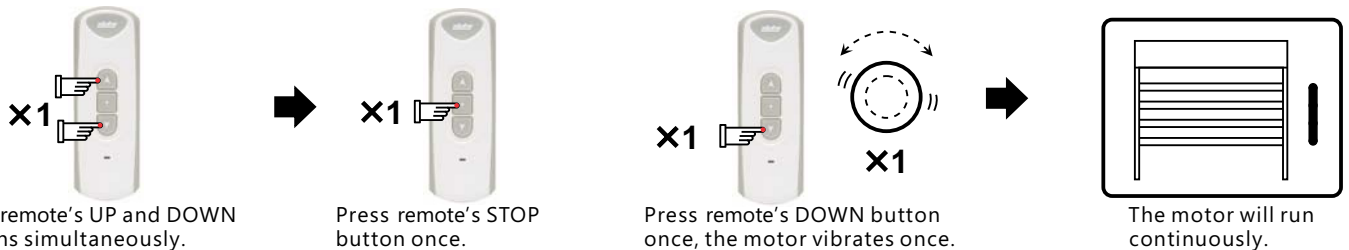
Press remote's UP and DOWN buttons simultaneously.

Press remote's STOP button once.

Press remote's UP button once, the motor vibrates once.

The motor will run step by step.

8. DELETE STEP BY STEP FUNCTION



Press remote's UP and DOWN buttons simultaneously.

Press remote's STOP button once.

Press remote's DOWN button once, the motor vibrates once.

The motor will run continuously.

! Announcement

Setting may fail due to the interference of signal. If in this case, please reset.

The remote RE101 is taken as an example in this instruction. The receiver is compatible with several other rolling code remotes.

Please do not press buttons for too long in case life span of battery declines. Pressing time should be at 0.5s, interval time should be 1 second. If the battery is in low power, please replace battery.

The control unit is of high voltage. Please do not place it in humid atmosphere.

Children should be supervised to ensure that they do not play with the appliance.

Ambient temperature: -10 °C to +55 °C.

All products are as per material subjects if there is change in appearance, color, function etc. This information is subject to changes without prior notice.