

Receiver for high capacity motors

1. SAFETY NOTES

1. Keep away from children to avoid any possible damage to the receiver caused by their play.
2. If the supply cord is damaged, it must be replaced by the manufacturer, the service agent or similarly qualified electrician in order to avoid a danger.
3. The receiver is of high voltage. Keep it away from water.
4. The installation pole is fixed to the installation board. Please be careful during the installation.

2. TECHNICAL SPECIFICATIONS

Power: AC120V(60Hz)

Rated Load: $\leq 1600W$

Lighting Output: $\leq 500W$

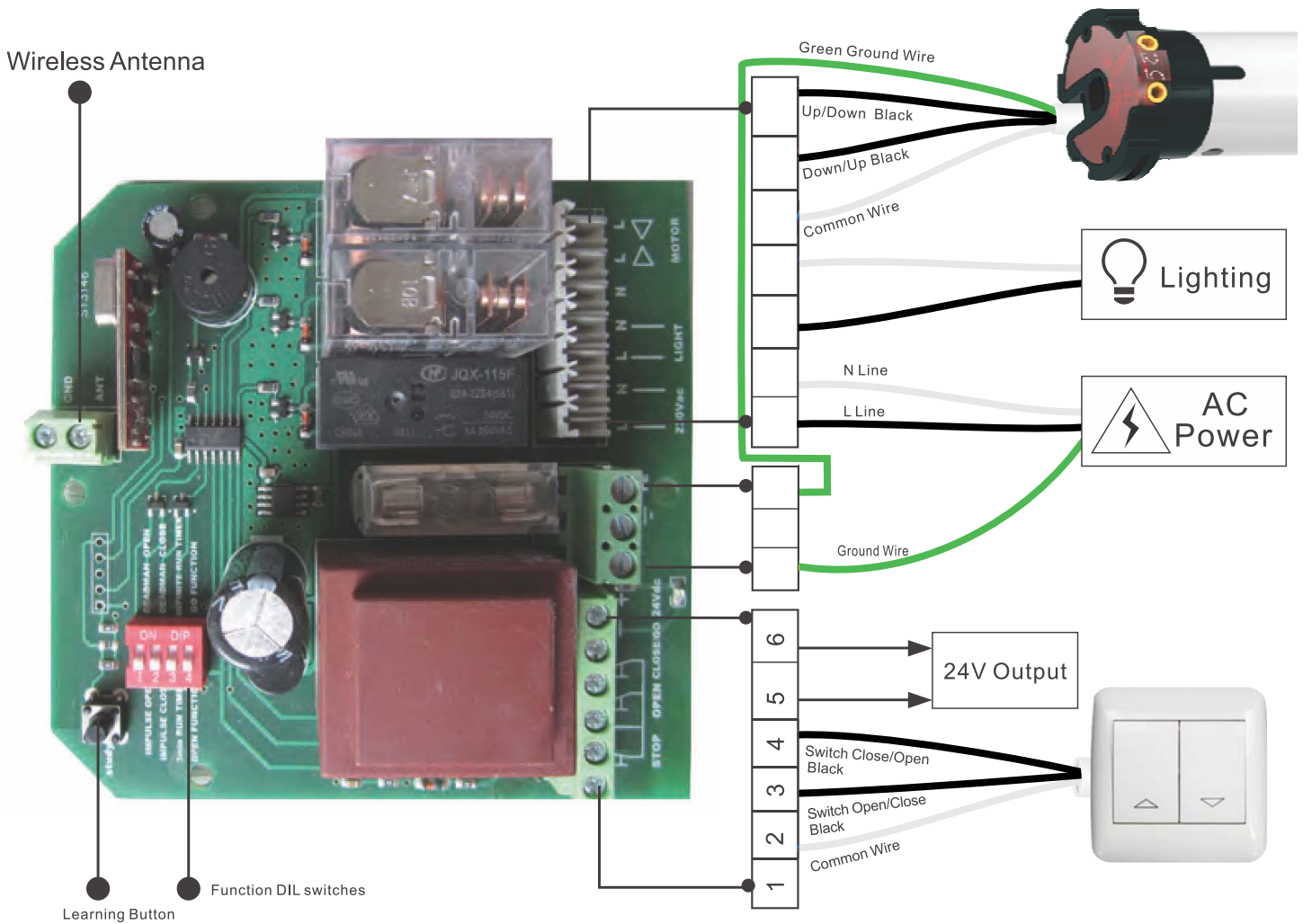
Fuse Rated Currency: 8A

The receiver will power off automatically after working for 3 minutes continuously.

The receiver can be controlled by 15 remotes at most.

3. WIRE CONNECTIONS

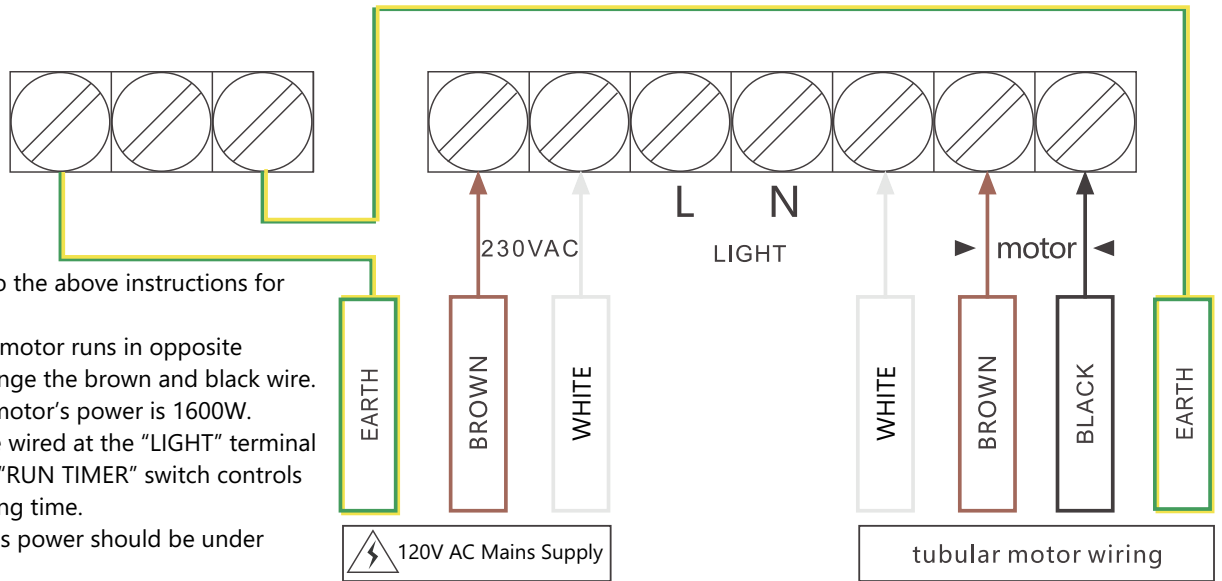
The wiring 230V/50Hz is taken as an example. For 120V/60Hz, please refer to the corresponding standard.



Receiver for high capacity motors

4. TERMINAL INSTRUCTION

1. Please refer to the above instructions for wiring.
2. If the tubular motor runs in opposite direction, exchange the brown and black wire.
NOTE: Tubular motor's power is 1600W.
3. A light can be wired at the "LIGHT" terminal if required. The "RUN TIMER" switch controls the light's running time.
NOTE: The light's power should be under 500W.



Program Setting

Note: We take RE110 keyring remote as an example. For any other remotes produced by our company, please follow the same instructions. The following "short press" means more than 0.5s and "long press" means more than 3s. The interval between every pressing should be at least 1s. There maybe other signal interference to cause setting to fail. Please set again.

5. CODE LEARNING

Note: After code learning, you can use the remote to control the tubular motor through UP, STOP and DOWN button.



The buzzer will ring after the receiver is powered on. Press the learning button on the receiver, the buzzer will ring again.

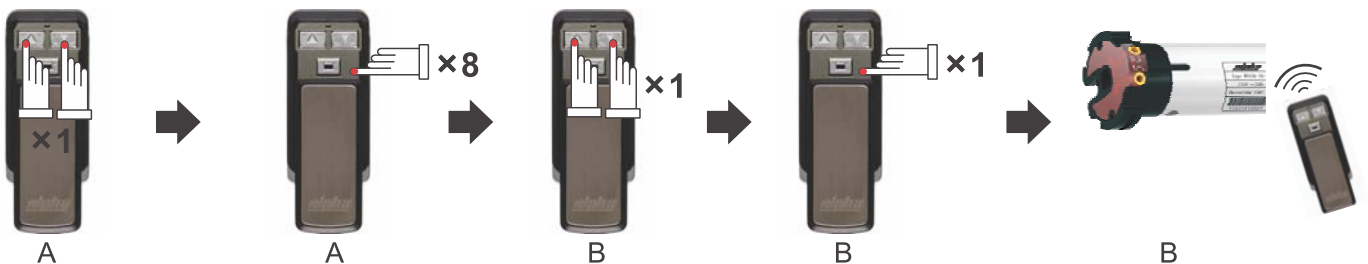
Short press the UP and DOWN buttons once.

Short press the STOP button once and the buzzer sounds 5 beeps.

Now the code learning is successful and you can control the motor.

6. COPY

Note: After copy, the new remote can control the motor as well.



Short press the UP and DOWN buttons of remote A once.

Short press the STOP button 8 times. The buzzer sounds 1 beep.

Short press the remote B's UP and DOWN button once.

Short press the STOP button once and the buzzer sounds 5 beeps.

Now the code learning is successful, you can control the motor by remote B.

Receiver for high capacity motors

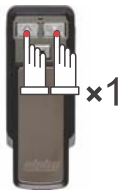
7. CODE DELETING

Way A



Long press the learning button on the receiver, the buzzer will ring once, and then ring again twice 2s later, now release the button, the code is deleted. All remotes that have learned receiver's code cannot control this receiver.

Way B



Press UP and DOWN buttons simultaneously.



Press remote's STOP button 7 times within 10s.

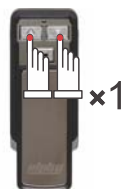


Press remote's UP button once with 10s, the motor will vibrate.



The remote you are operating now won't control the motor anymore.

Way C



Press UP and DOWN buttons simultaneously.



Press remote's STOP button 6 times within 10s.



Press remote's UP button once with 10s, the motor will vibrate.



All the remotes that have already learned the motor's code won't control the motor anymore.

8. DIL SWITCH FUNCTIONS

DIL1

IMPULSE OPEN
DEADMAN OPEN

tubular motor runs upwards continuously
tubular motor runs upwards from point to point

DIL2

IMPULSE CLOSE
DEADMAN CLOSE

tubular motor runs downwards continuously
tubular motor runs downwards from point to point

DIL3

3min RUN TIMER
INFINITE RUN TIMER

the light will be off after working 3 minutes
the light works all the time

DIL4

OPEN FUNCTION

wall switch connects to terminal 2 and 3, the motor will run upwards
wall switch connects to terminal 2 and 4, the motor will run downwards

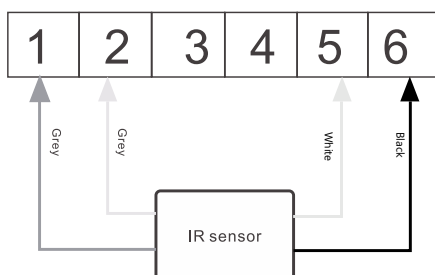
GO FUNCTION

wall switch connects to terminal 2 and 4, the motor will run upwards, downwards and stop running

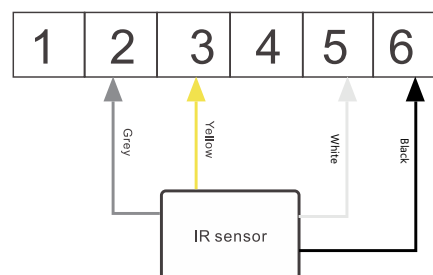


9. OTHER AUXILIARY CONNECTIONS

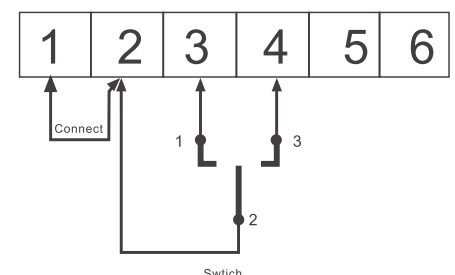
A. wiring for obstacle-stop function.



B. wiring for obstacle-rebound function



C. wiring for manual switch



10. TROUBLESHOOTING

TYPE OF FAULT	REMEDY
Transmit LED of the remote does not light up	check the battery in the remote.
No reaction after signal sent	check the power & wire connection. Check if the temperature is normal (-10°-+55°C)
The remote distance becomes shorter	change the battery or check if there is any interference.
Remote is ok but the signal cannot be sent	check the power and the program setting.