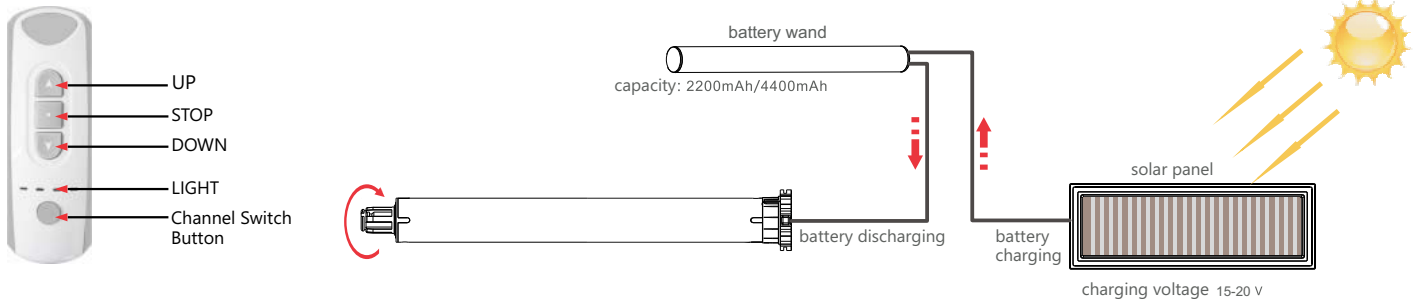


## 1. TECHNICAL SPECIFICATIONS

Power: Lithium battery DC12V  
 Protection Class: IP44  
 Received frequency: 433.92MHz

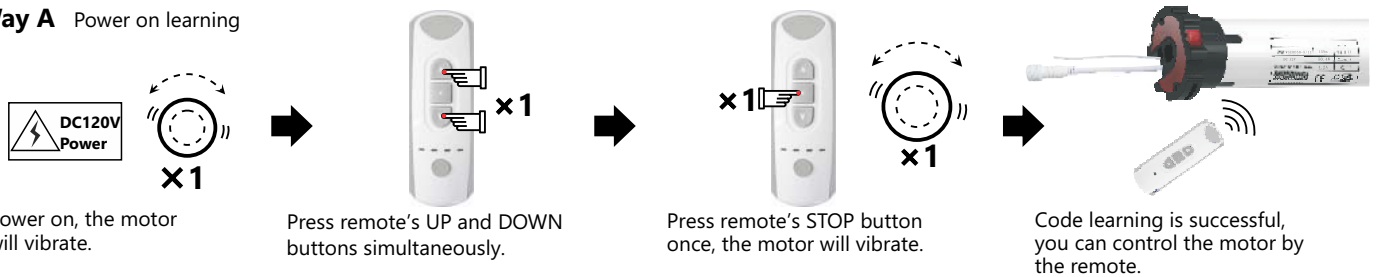
Code: Rolling code  
 One motor can be controlled by 15 units of remotes at most

## 2. WIRE CONNECTION



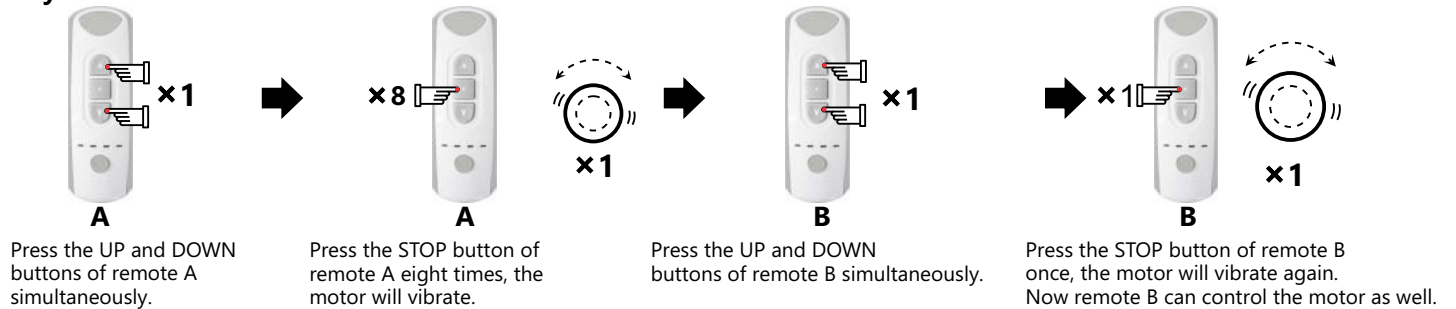
## 3. CODE LEARNING Note: After code learning, you can use the remote to control the motor to run up, down and stop.

### Way A Power on learning

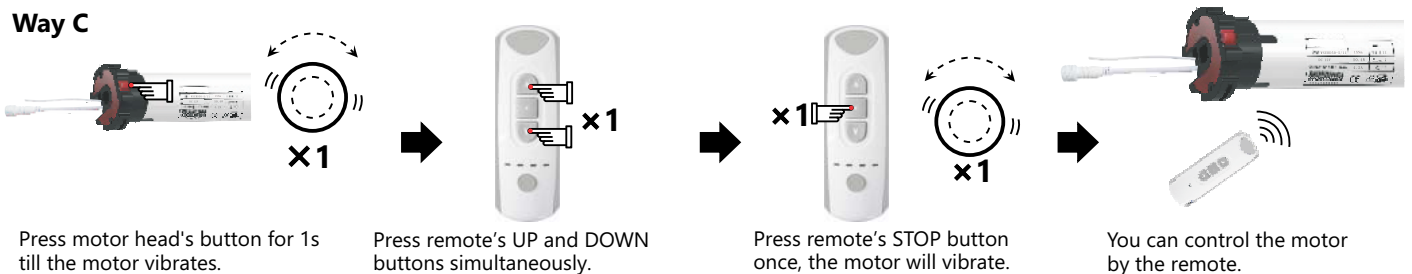


**Note:** a) Way A is only for the tubular motor which didn't learn any remote's code.  
 b) If the motor has already learned remote's code, Way A is invalid for this motor, but you can cut the electricity and then power on the motor three times continuously, and make sure the motor vibrate each time, then Way A is valid for this motor.

### Way B Note: Remote A has learned motor's code, and remote B is a new one.

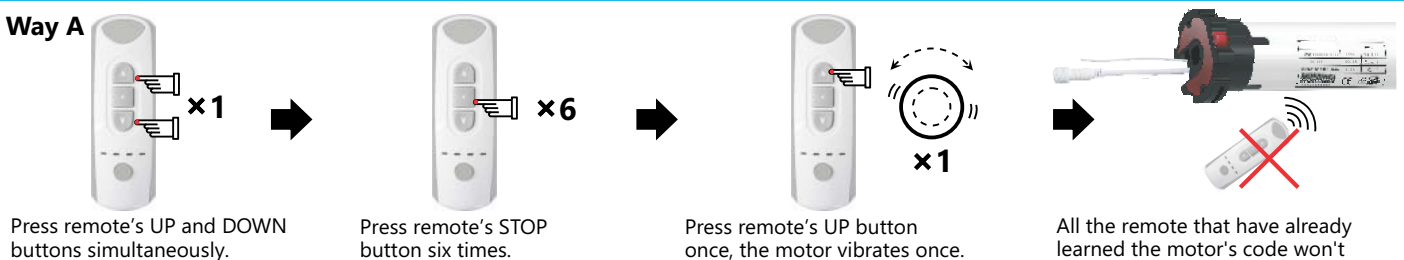


### Way C



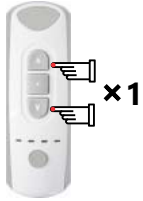
## 4. CODE DELETING

### Way A



**Note:** All the remotes will not control this motor, unless you cut off the power and do code learning again.

## Way B



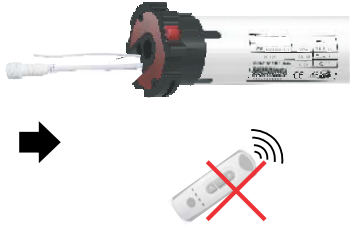
Press remote's UP and DOWN buttons simultaneously.



Press remote's STOP button seven times.



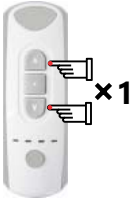
Press remote's UP button once, the motor vibrates once.



This remote you are operating now won't control the motor any more.

## 5. DIRECTION CHANGE

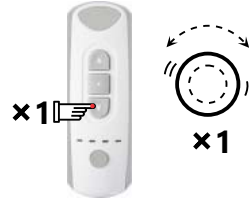
### Way A



Press remote's UP and DOWN buttons simultaneously.



Press remote's STOP button six times.



Press remote's DOWN button once, the motor vibrates once.



The motor's running direction is changed.

**Note:** The motor's running direction will not be changed if the two wires are exchanged.

### Way B

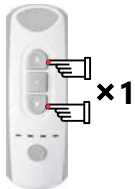


Press motor head's button for 5s till the motor vibrates.



The motor's running direction is changed.

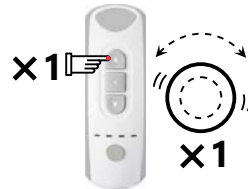
## 6. SET STEP BY STEP FUNCTION



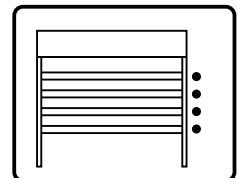
Press remote's UP and DOWN buttons simultaneously.



Press remote's STOP button once.

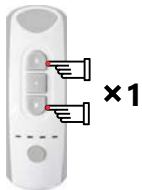


Press remote's UP button once, the motor vibrates once.

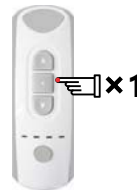


The motor will run step by step.

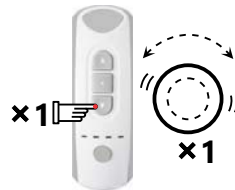
## 7. DELETE STEP BY STEP FUNCTION



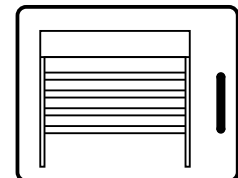
Press remote's UP and DOWN buttons simultaneously.



Press remote's STOP button once.



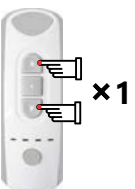
Press remote's DOWN button once, the motor vibrates once.



The motor will run continuously.

**Note:** If the motor runs step by step, long press remote's UP or DOWN button, the motor will run continuously.

## 8. UP LIMIT SETTING



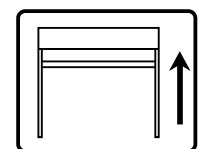
Press remote's UP and DOWN buttons simultaneously.



Press remote's STOP button twice.



Press remote's UP button once, the motor vibrates once.



The up limit is set, the motor will stop running when it reaches to the UP limit

## 9. DOWN LIMIT SETTING



x1



Press remote's UP and DOWN buttons simultaneously.



x2

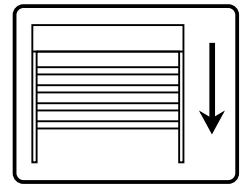


Press remote's STOP button twice.



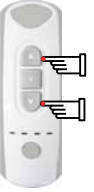
x1

Press remote's DOWN button once, the motor vibrates.



The down limit is set, the motor will stop running when it reaches to the down limit.

## 10. UP LIMIT DELETING



x1



Press remote's UP and DOWN buttons simultaneously.



x4

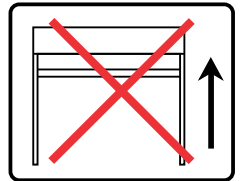


Press remote's STOP button four times.



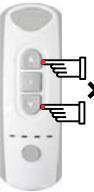
x1

Press remote's UP button once, the motor vibrates once.



The up limit is deleted.

## 11. DOWN LIMIT DELETING



x1



Press remote's UP and DOWN buttons simultaneously.



x4

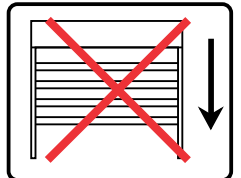


Press remote's STOP button four times.



x1

Press remote's DOWN button once, the motor vibrates once.



The down limit is deleted.

## 12. THE THIRD LIMIT

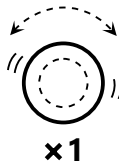
### A. The Third Limit Setting



x4



Press remote's STOP button four times when the motor stops running.



x1

The motor will vibrate once, it means this position is set as the third limit.



x1

Long press remote's STOP button for 2s, the motor will run to the third limit and stop.

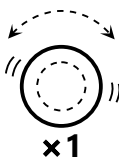
### B. The Third Limit Setting



x4



Make the motor stop at ideal position, press remote's STOP button four times.



x1

The motor will vibrate once, the original third limit will be deleted, and this position is set as new third limit.



x1

Long press remote's STOP button, the motor will run to the new third limit and stop.

**Note:** 1) The third limit is also named as intermediate limit, it can be set at any position between up limit and down limit.  
2) If the up limit or down limit is deleted, the third limit will be deleted automatically.

### ! Announcement

The setting may fail due to other signal interference. In this case, please reset.  
The remote RE101 is taken as an example in this instruction. The receiver is compatible with several other rolling code remotes.  
If remote's battery is in low power, please replace it.  
The receiver is of high voltage, please do not place it in humid atmosphere.  
Children should be supervised to ensure that they do not play with the appliance.  
Working temperature: -10°C - +55 °C  
All products are as per real subjects. There will be no prior notification if any change in appearance, color, functions etc.