


1. TECHNICAL SPECIFICATIONS

Protection index: IP20
The motor can be compatible with 15 remotes at most

Received frequency: 433.92MHz
Charging: 16.8V/1A

Code: Rolling
Charge time: 6 hours

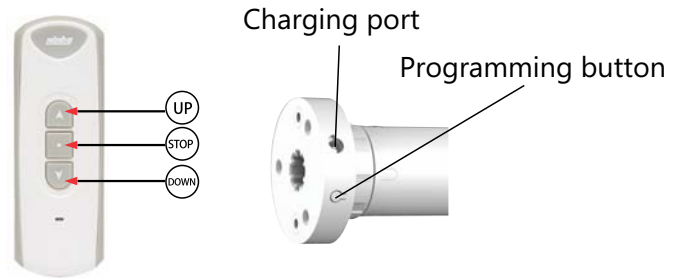
2. CHARGING AND WAKING UP MOTOR

 Please charge the motor using charger 16.8V/1A before operation.
The motor won't function until it has been charged.

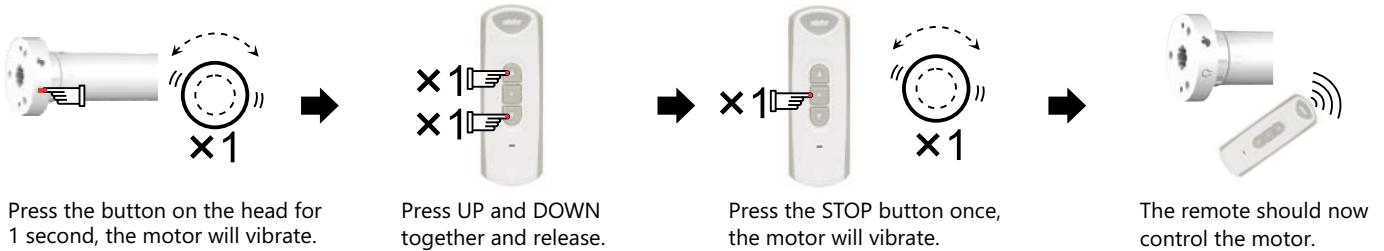
Waking the motor up for the first time:

Method A Plug ALDC charger into charging port for a few seconds till motor vibrates.

Method B Press and hold white motor head button for 6 seconds, green LED will flash 3 times and then turn red.

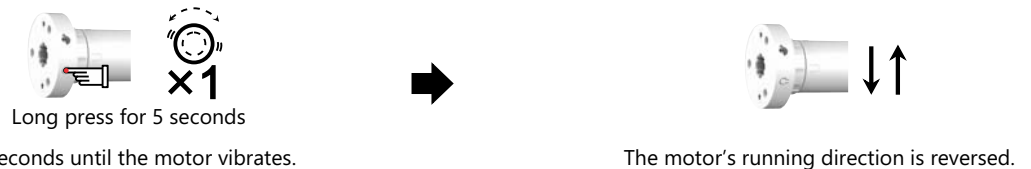


3. CODE LEARNING

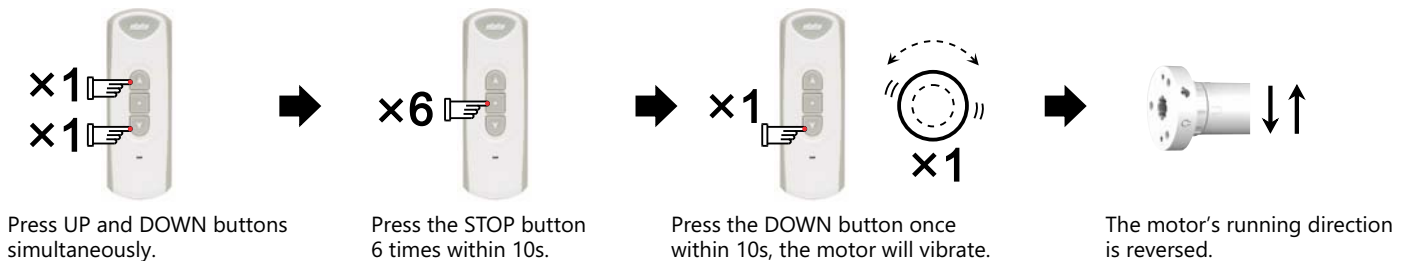


4. CHANGING THE RUNNING DIRECTION

Method A.



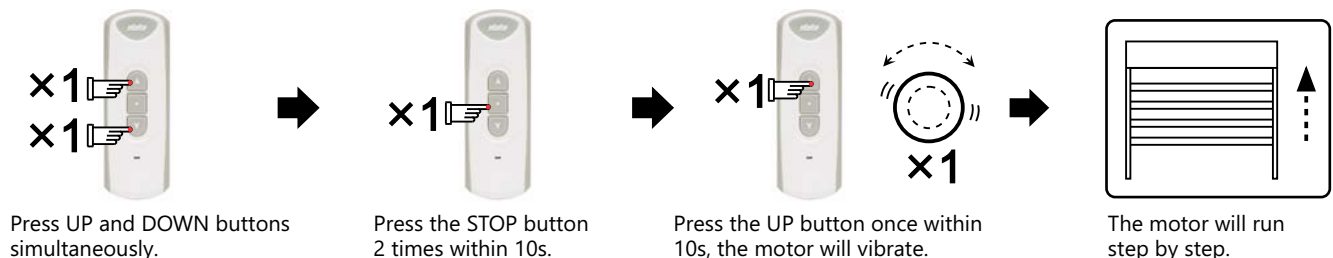
Method B.



5. TURN ON STEP BY STEP FUNCTION

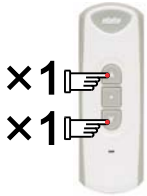
The motor will move in small increments unless the button is held down.

Note: If the motor is in step-by-step mode, pressing the UP or DOWN button for 3s will make the motor will run continuously.



6. TURN OFF STEP BY STEP FUNCTION The motor will operate normally.

Note: If the motor is in step-by-step mode, pressing the UP or DOWN button for 3s will make the motor will run continuously.



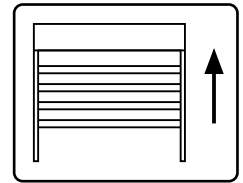
Press UP and DOWN buttons simultaneously.



Press the STOP button 2 times within 10s.



Press the DOWN button once within 10s, the motor will vibrate.

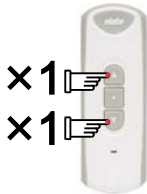


The motor will run continuously.

7. TOP LIMIT SETTING

First, move the blind to the desired position.

First, move the blind to the desired position.



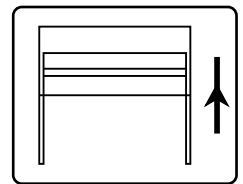
Press UP and DOWN buttons simultaneously.



Press the STOP button 2 times within 10s.



Press the UP button once within 10s, the motor will vibrate.



The TOP limit is set

8. BOTTOM LIMIT SETTING

First, move the blind to the desired position.

First, move the blind to the desired position.



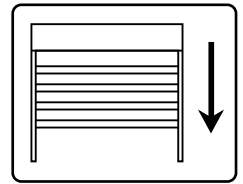
Press UP and DOWN buttons simultaneously.



Press the STOP button 2 times within 10s.



Press the DOWN button once within 10s, the motor will vibrate.

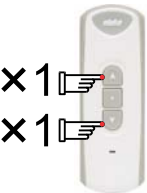


The BOTTOM limit is set

9. TOP LIMIT DELETING

First, move the blind to the desired position.

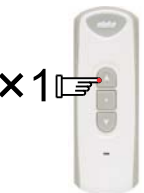
First, move the blind to the desired position.



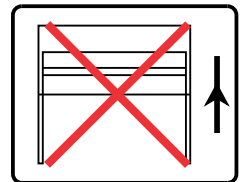
Press UP and DOWN buttons simultaneously.



Press the STOP button 4 times within 10s.



Press the UP button once within 10s, the motor will vibrate.

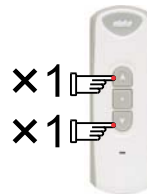


The top limit is deleted.

10. BOTTOM LIMIT DELETING

First, move the blind to the desired position.

First, move the blind to the desired position.



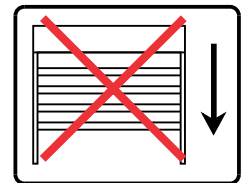
Press UP and DOWN buttons simultaneously.



Press the STOP button 4 times within 10s.



Press the DOWN button once within 10s, the motor will vibrate.



The bottom limit is deleted.

11. CODE DELETING

Method A: This method deletes all channels from the remote you are holding from the motor.

Press the UP and DOWN buttons simultaneously.

Press the STOP button 7 times within 10s.

Press the UP button once within 10s, the motor will vibrate.

All channels from the remote you are holding are now deleted from this motor. Others will remain.

Method B: This method deletes all channels from all remotes from the motor's memory.

Press UP and DOWN buttons simultaneously.

Press the STOP button 6 times within 10s.

Press the UP button once within 10s, the motor will vibrate.

All the remote channels in the motor's memory are deleted.

12. ASSIGNING AN ADDITIONAL REMOTE

EXISTING
Press UP and DOWN together and release on the existing remote.

EXISTING
Press STOP 8 times, the motor will vibrate.

NEW
Press UP and DOWN together and release on the new remote.

NEW
Press STOP once and the motor will vibrate. The new remote channel will now operate the motor.

13. THE THIRD LIMIT

First, move the blind to the desired position.

First, move the blind to the desired position.

A. Set the Third Limit

Note: The third limit is also named as the intermediate limit, it is available at any position between up and down limit. The third limit will be deleted automatically if the up or down limit is deleted.

Move the blind to the desired position and press STOP 4 times.

The motor will vibrate; it means the current position is set as the third limit.

Press the STOP button for 2s, the motor will run to the third limit position from any other current position.

B. Reset the Third Limit

The third limit will be deleted automatically if the up or down limit is deleted.

Move the blind to the desired position and press STOP 4 times.

The motor will vibrate; it means the current position is set as the third limit.

Press the STOP button for 2s, the motor will run to the third limit position from any other current position.

14. THE LIGHT INDICATOR

(1) Recharging Light Indicator



Red light

(1) When the battery is recharging, the red light is on.

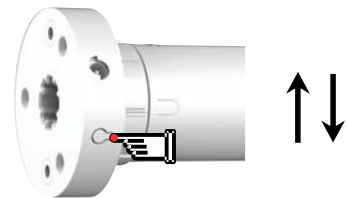
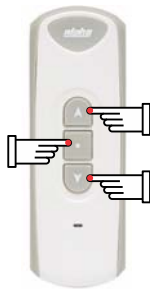


Green Light

(2) When the battery is fully charged, the light will turn green.

Note: During motor charging, if red and green lights are both on, it means the charging source is under powered, please change the charging source.

(2) Low battery light indicator on motor



Red light flashing

1) When battery voltage is too low, press any button on the remote, motor will vibrate once and the red light on the motor will flash and motor will stop running, this situation lasts 10 times, please recharge now.

2) If the motor is not charged, the motor won't vibrate and only the red light will flash, the battery needs to be charged immediately.

15. SLEEP MODE

Put motor into "sleep mode". This function reboots the motor if you cannot assign a remote to the motor for the first time. Press motor head button once, motor vibrates.

Press motor head button 4 times, red light illuminates with each press and then turns green.

Announcement

If the product hasn't been used for half a year, please recharge it.

Don't put the product into a fire, in case of fire, it may explode and cause environment pollution.

Setting may fail due to the interference of signal. If this happens, please reset.

RE101 is taken as an example in product introduction. The motor is compatible with several other controls of the same make.

Please do not press buttons for too long in case life span of battery declines. The button should be about 0.5s with 1s interval.

If the battery is in low power, remote doesn't work, even if the light comes on, please replace battery.

Children should be supervised to ensure that they do not play with the appliance.

Ambient temperature: -20°C - +65°C, charging temperature: 0°C - 65°C.

This information is subject to changes without prior notice.