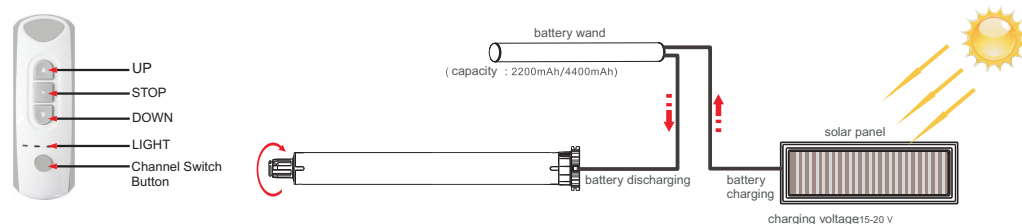


# ERD50 Motor Instruction

## 1 Technique Specifications

- Motor:
- Power: Lithium battery DC12V
  - Protection Class: IP44
  - Received frequency: 433.92MHz
  - Code: Rolling code
  - One motor can be controlled by 15 units of emitters at most

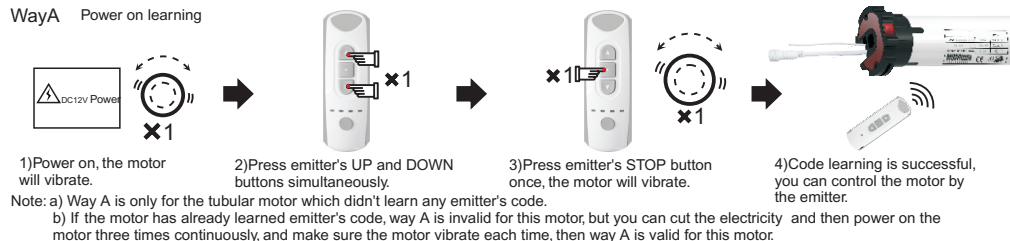
## 2 Wire Connection



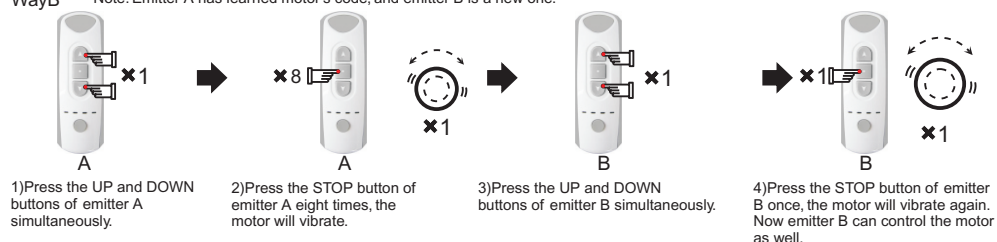
## 3 Code Learning

Note: After code learning, you can use the emitter to control the motor to run up, down and stop.

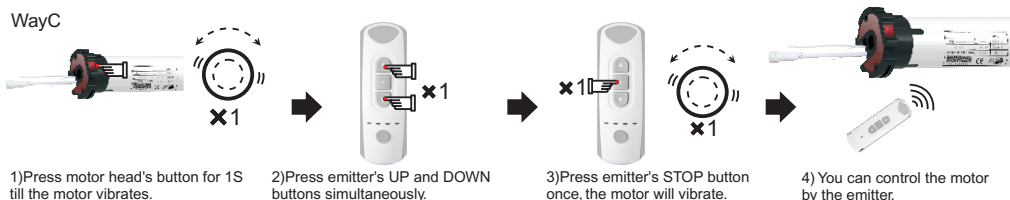
### WayA Power on learning



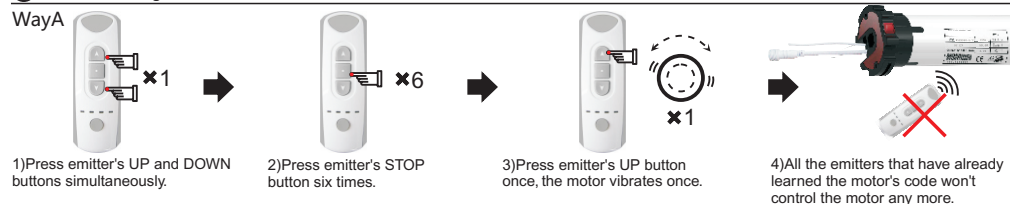
### WayB Note: Emitter A has learned motor's code, and emitter B is a new one.



### WayC

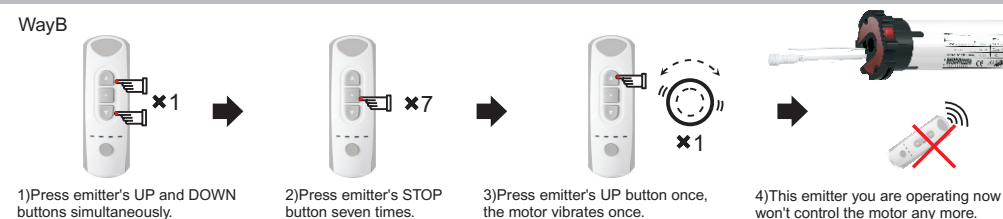


## 4 Code Deleting



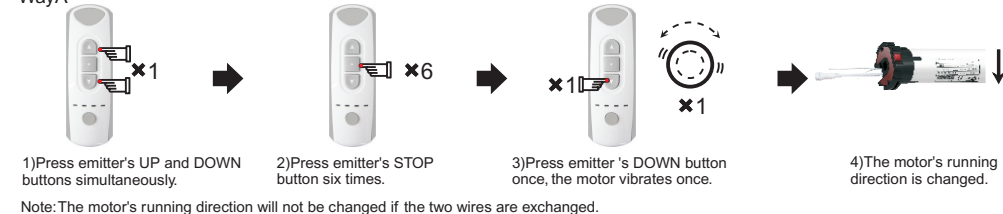
Note: All the emitter will not control this motor, unless you cut off the power and do code learning again.

### WayB



## 5 Direction Change

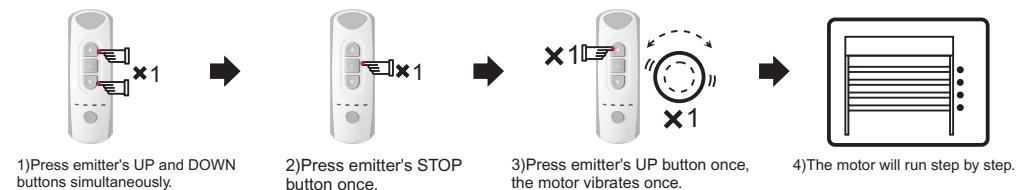
### WayA



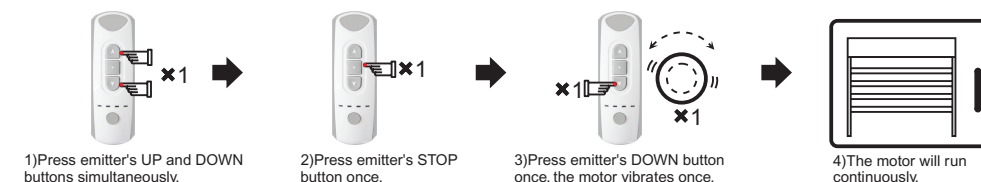
### WayB



## 6 Set Step by Step Function

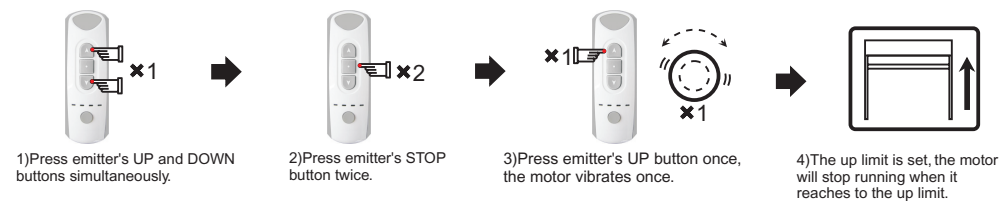


## 7 Delete Step by Step Function



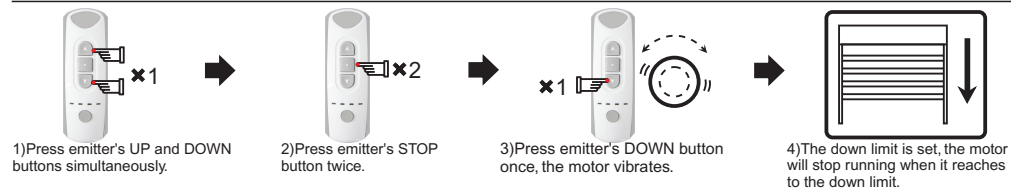
Note: If the motor runs step by step, long press emitter's UP or DOWN button, the motor will run continuously.

## 8 Up Limit Setting

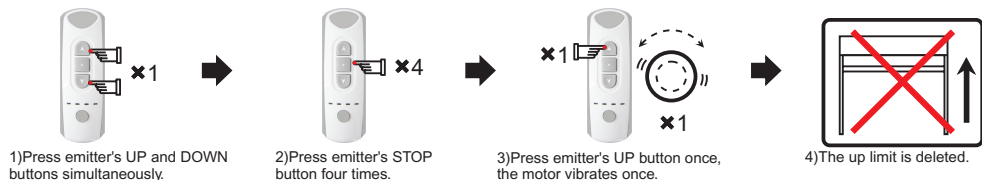


# ERD50 Motor Instruction

## 9 Down Limit Setting



## 10 Up Limit Deleting

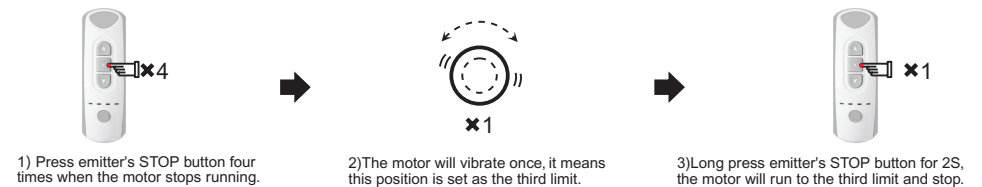


## 11 Down Limit Deleting

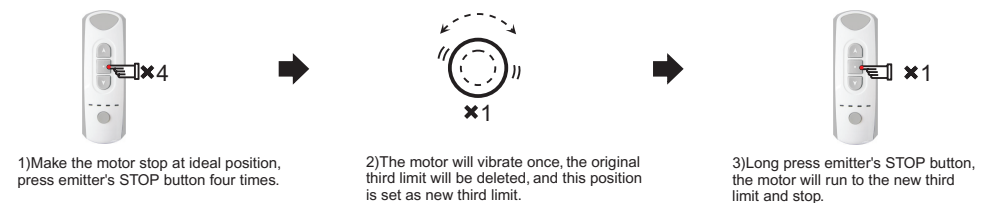


## 12 The Third Limit

### A. The Third Limit Setting



### B. The Third Limit Resetting



Note: 1) The third limit is also named as intermediate limit, it can be set at any position between up limit and down limit.

2) If the up limit or down limit is deleted, the third limit will be deleted automatically.



## Announcement

- The setting may fail due to other signal interference. In this case, please reset.
- The emitter RE101 is taken as an example in this instruction. The receiver is compatible with several other rolling code emitters.
- If emitter's battery is in low power, please replace it.
- The receiver is of high voltage, please do not place it in humid atmosphere.
- Children should be supervised to ensure that they do not play with the appliance.
- Working temperature:  $-10^{\circ}\text{C} \sim +55^{\circ}\text{C}$ .
- All products are as per real subjects. There will be no prior notification if any change in appearance, color, functions etc.