

## 1 Technical Specifications

- Protection index: IP 20
- The motor can be compatible with 15 emitters at most
- Received frequency: 433.92MHz
- Charging: 16.8V/1A
- Code: Rolling code
- Charge time: 6 hours

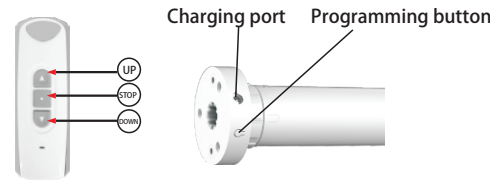
## 2 Charging and Wake up Motor

 Please charge the motor using charger 16.8V/1A before operation. The motor won't function until it has been charged.

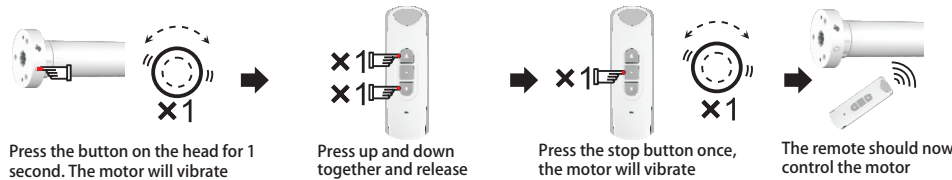
Waking the motor up for the first time:

Method A: Plug ALDC charger into charging port for few seconds till motor vibrates.

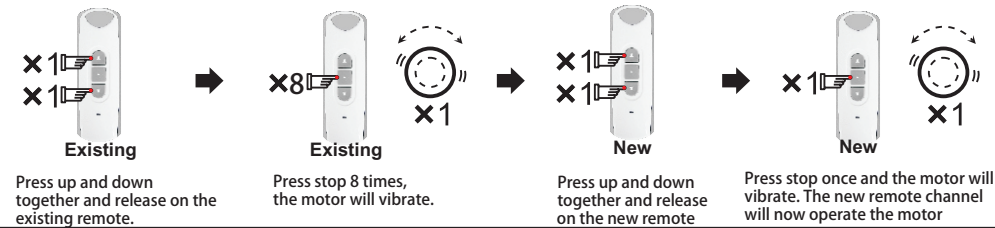
Method B: Press and hold white motor head button for 6 seconds, green LED will flash 3 times and then turn red.



## 3 Code Learning

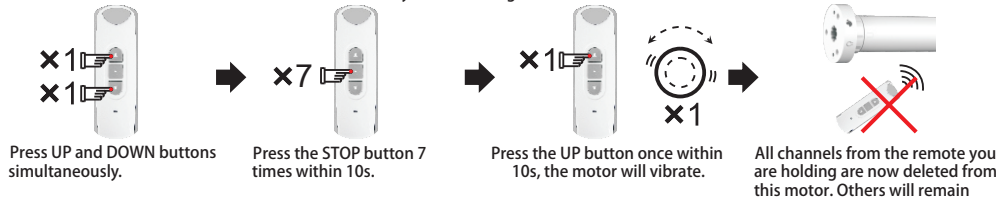


## 4 Assigning an additional remote

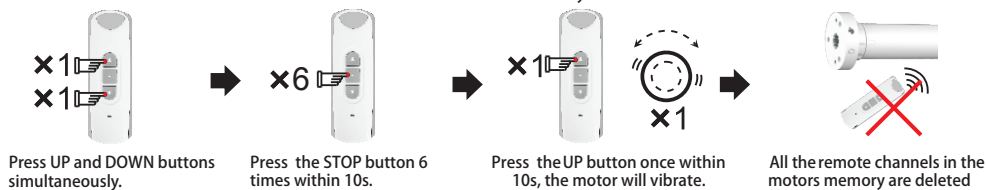


## 5 Code Deleting

A. This method deletes all channels from the remote you are holding from the motor



B: This method deletes all channels from all remotes from the motors memory

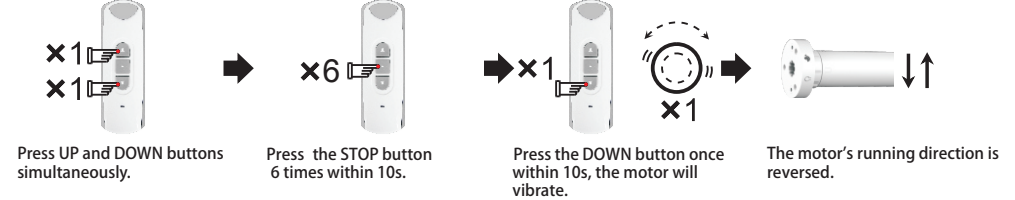


## 6 Changing the running direction

Method A.



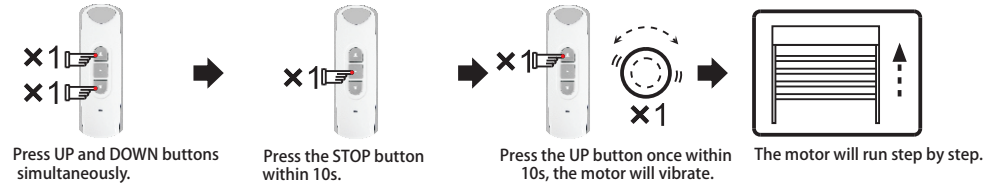
Method B.



## 7 Turn on Step by Step Function

The motor will move in small increments unless the button is held down.

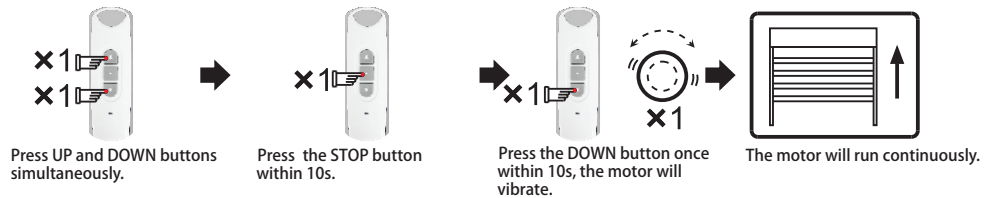
Note: If the motor is in step-by-step mode, pressing the UP or DOWN button for 3s will make the motor will run continuously.



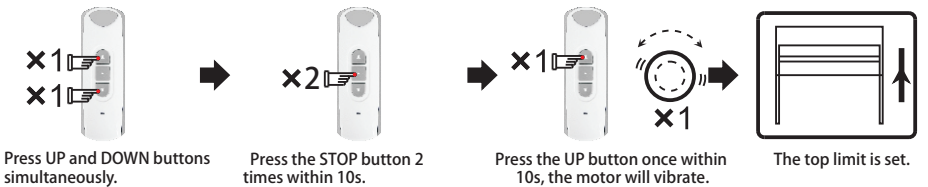
## 8 Turn off Step by Step Function

The motor will operate normally.

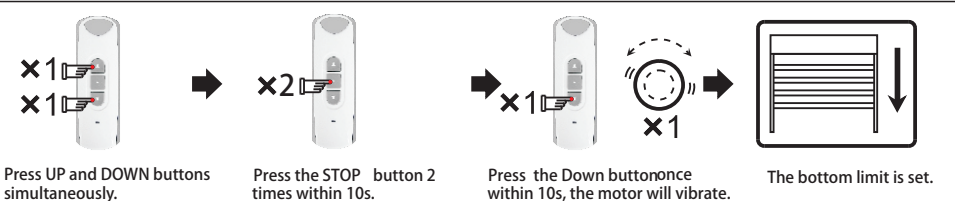
Note: If the motor is in step-by-step mode, pressing the UP or DOWN button for 3s will make the motor will run continuously.



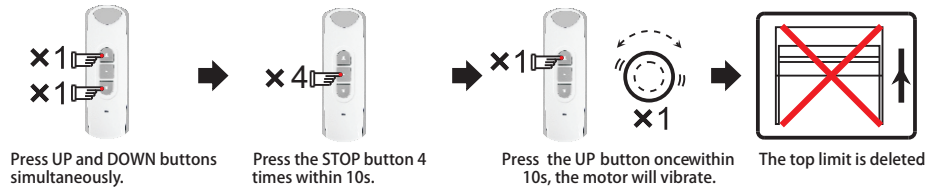
## 9 Top Limit Setting



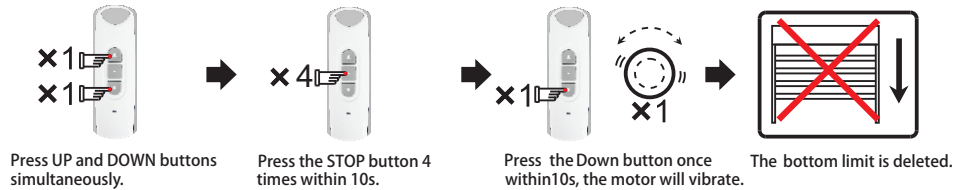
## 10 Bottom Limit Setting



## 11 Top Limit Deleting

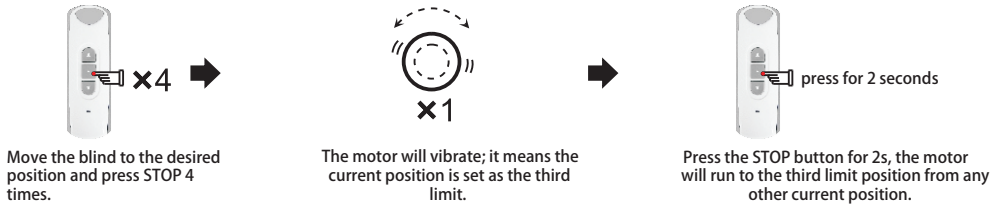


## 12 Bottom Limit Deleting

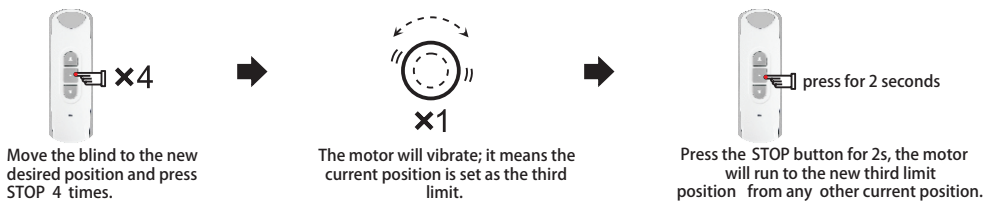


## 13 The Third Limit

Note: 1)The third limit is also named as the intermediate limit, it is available at any position between up and down limit.  
A: Set The Third Limit The third limit will be deleted automatically if the up or down limit is deleted.

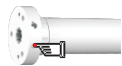


B: Reset The Third Limit. The third limit will be deleted automatically if the up or down limit is deleted.



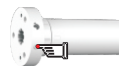
## 14 The Light Indicator

(1). Recharging Light Indicator



Red light

1)When the battery is recharging, the red light is on.

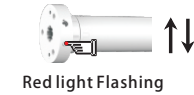
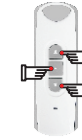


Green Light

2)When the battery is fully charged, the light will turn green.

Note: During motor charging, if red and green light are both on, it means the charging source is under powered, please change the charging source.

(2)Low Battery Light indicator, on motor.



Red light Flashing

- 1)When battery voltage is too low, press any button on the remote, motor will vibrate once and the red light on the motor will flash and motor will stop running, this situation last 10 times, please recharge now.
- 2)If the motor is not charged, the motor won't vibrate and only the red light will flash, the battery needs be charged immediately.

## 15 Sleep Mode

Put motor into "sleep mode". This function reboots the motor if you cannot assign a remote to the motor for the first time.

Press motor head button once motor vibrates.

Press motor head button 4 times - (red light illuminates with each press and then turns green).

## ! Announcement

- If the product hasn't been used for half a year, please recharge it.
- Don't put the product into a fire, in case of fire, it may explode and cause environment pollution.
- Setting may fail due to the interference of signal. If this happens, please reset.
- RE101 is taken as an example in product introduction. The motor is compatible with several other controls of the same make.
- Please do not press buttons for too long in case life span of battery declines. The button should be about 0.5s with 1s interval. If the battery is in low power, emitter don't work, even if the light comes on, please replace battery.
- Children should be supervised to ensure that they do not play with the appliance.
- Ambient temperature: -20°C to +65°C, charging temperature: 0°C~65°C.
- This information is subject to changes without prior notice.