

ERD30-B Motor Instruction -Charging:DC16.8V

06.04.SMS-DC25SC3BYTA-02-V1

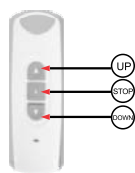
1 Technical Specifications

- Protection index: IP 20
- The motor can be compatible with 15 emitters at most
- Received frequency:433.92MHz
- Charging:16.8V/1A
- Built-in battery;
Battery capacity:2500mAH
- Code: Rolling code
- Nominal voltage:11.1V
- Charge time:6 hours

2 Charging Connection



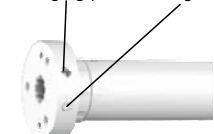
Please charge the motor before operation. The motor will not function until it has been charged.



Power Source: 16.8V/1A

DC003 CHARGER

Charging port Programming button



3 Code Learning

Note: After code learning, you can use the remote to control the motor to run up, down and stop.



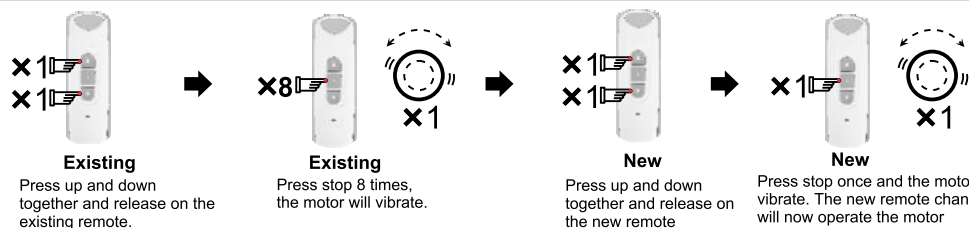
Press the button on the head for 1 second. The motor will vibrate

Press up and down together and release

Press the stop button once, the motor will vibrate

The remote should now control the motor

4 Assigning an additional remote



Existing

Press up and down together and release on the existing remote.

Existing

Press stop 8 times, the motor will vibrate.

New

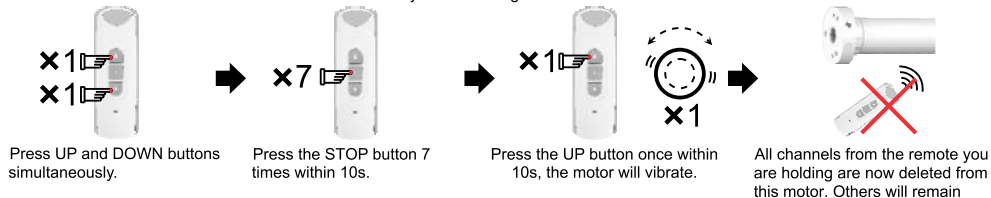
Press up and down together and release on the new remote

New

Press stop once and the motor will vibrate. The new remote channel will now operate the motor

5 Code Deleting

A. This method deletes all channels from the remote you are holding from the motor



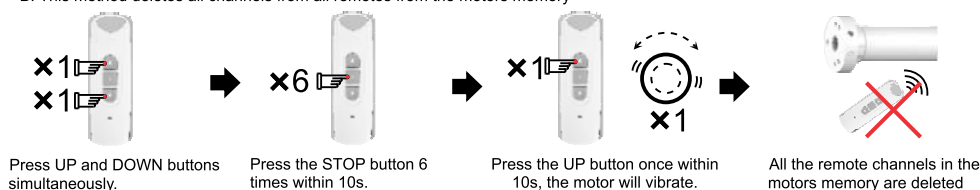
Press UP and DOWN buttons simultaneously.

Press the STOP button 7 times within 10s.

Press the UP button once within 10s, the motor will vibrate.

All channels from the remote you are holding are now deleted from this motor. Others will remain

B: This method deletes all channels from all remotes from the motors memory



Press UP and DOWN buttons simultaneously.

Press the STOP button 6 times within 10s.

Press the UP button once within 10s, the motor will vibrate.

All the remote channels in the motors memory are deleted

6 Changing the running direction

Method A.



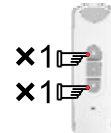
Long press for 5 seconds

Press motor head's button for about 5s until the motor vibrates.



The motor's running direction is reversed.

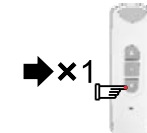
Method B.



Press UP and DOWN buttons simultaneously.



Press the STOP button 6 times within 10s.



Press the DOWN button once within 10s, the motor will vibrate.

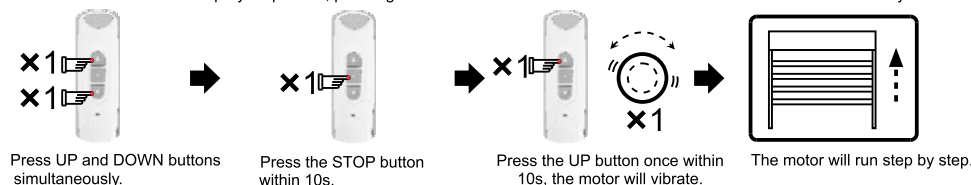


The motor's running direction is reversed.

7 Turn on Step by Step Function

The motor will move in small increments unless the button is held down.

Note: If the motor is in step-by-step mode, pressing the UP or DOWN button for 3s will make the motor run continuously.



Press UP and DOWN buttons simultaneously.

Press the STOP button within 10s.

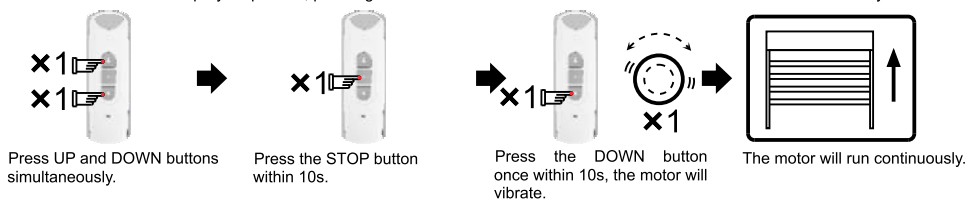
Press the UP button once within 10s, the motor will vibrate.

The motor will run step by step.

8 Turn off Step by Step Function

The motor will operate normally.

Note: If the motor is in step-by-step mode, pressing the UP or DOWN button for 3s will make the motor run continuously.



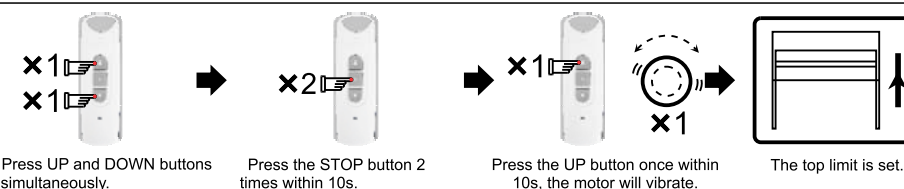
Press UP and DOWN buttons simultaneously.

Press the STOP button within 10s.

Press the DOWN button once within 10s, the motor will vibrate.

The motor will run continuously.

9 Top Limit Setting



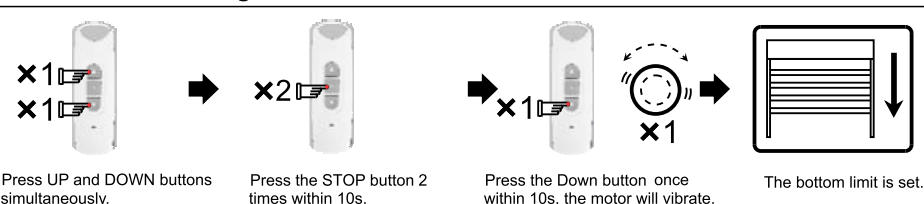
Press UP and DOWN buttons simultaneously.

Press the STOP button 2 times within 10s.

Press the UP button once within 10s, the motor will vibrate.

The top limit is set.

10 Bottom Limit Setting



Press UP and DOWN buttons simultaneously.

Press the STOP button 2 times within 10s.

Press the Down button once within 10s, the motor will vibrate.

The bottom limit is set.

11 Top Limit Deleting

Press UP and DOWN buttons simultaneously.

Press the STOP button 4 times within 10s.

Press the UP button once within 10s, the motor will vibrate.

The top limit is deleted.

12 Bottom Limit Deleting

Press UP and DOWN buttons simultaneously.

Press the STOP button 4 times within 10s.

Press the Down button once within 10s, the motor will vibrate.

The bottom limit is deleted.

13 The Third Limit

Note: 1)The third limit is also named as the intermediate limit, it is available at any position between up and down limit.

A :Set The Third Limit

The third limit will be deleted automatically if the up or down limit is deleted.

Move the blind to the desired position and press STOP 4 times.

The motor will vibrate; it means the current position is set as the third limit.

Press the STOP button for 2s, the motor will run to the third limit position from any other current position.

B: Reset The Third Limit.

The third limit will be deleted automatically if the up or down limit is deleted.

Move the blind to the new desired position and press STOP 4 times.

The motor will vibrate; it means the current position is set as the third limit.

Press the STOP button for 2s, the motor will run to the new third limit position from any other current position.

14 The Light indicator

(1).Recharging Light Indicator

Red Light

1)When the battery is recharging, the red light is on.

Green Light

2)When the battery is fully charged, the light will turn green.

Note: During motor charging ,if red and green light are both on, it means the charging source is under powered, please change the charging source.

(2)Low Battery Light indicator, on motor.

Red light Flashing

1)When battery voltage is too low, press any button on the remote, motor will vibrate once and the red light on the motorwill flash and motor will stop running, this situation last 10 times, please recharge now.

2)If the motor is not charged, the motor won't vibrate and only the red light will flash, the battery needs be charged immediately.

Announcement

- If the product hasn't been used for half a year, please recharge it.
- Don't put the product into a fire, in case of fire, it may explode and cause environment pollution.
- Setting may fail due to the interference of signal. If this happens, please reset.
- RE101 is taken as an example in product introduction. The rmotor is compatible with several other controls of the same make.
- Please do not press buttons for too long in case life span of battery declines. The button should be about 0.5s with 1s interval. If the battery is in low power, emitter don't work, even if the light comes on, please replace battery.
- Children should be supervised to ensure that they do not play with the appliance.
- Ambient temperature:-20℃ to +65℃, charging temperature : 0℃~65℃
- This information is subject to changes without prior notice.